

WAAS CH <b>77826</b> <b>W08A</b>	APP CRS <b>087°</b>	Rwy Idg TDZE Apt Elev	<b>9000</b> <b>95</b> <b>96</b>
--	------------------------	-----------------------------	---------------------------------------

# RNAV (GPS) Z RWY 8L

GEORGE BUSH INTCNL/HOUSTON (IAH)

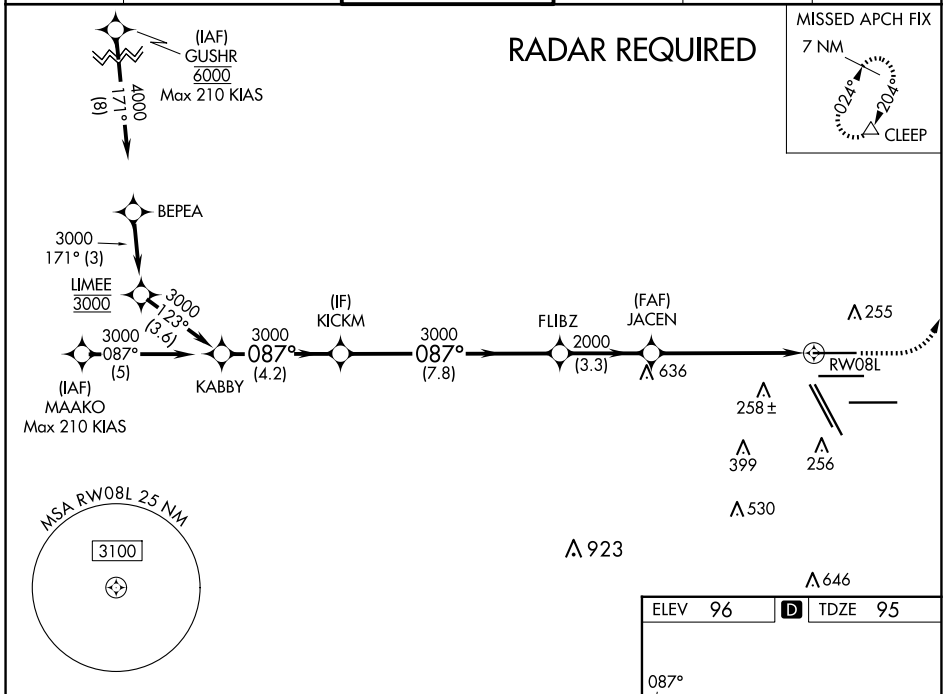
▼ For uncompensated Baro-VNAV systems, LNAV/VNAV NA below -3°C (27°F) or above 54°C (130°F). For inop ALSF, increase LPV Cat E visibility to RVR 4000, LNAV/VNAV Cat E visibility to 1¼, and LNAV Cat C/D/E visibility to 1¾. Simultaneous approach authorized with Rwy 8R and Rwy 9. DME/DME RNP-0.3 NA. Use of FD or AP providing RNAV track guidance required during simultaneous operations. LNAV procedure NA during simultaneous operations.

ALSF-2



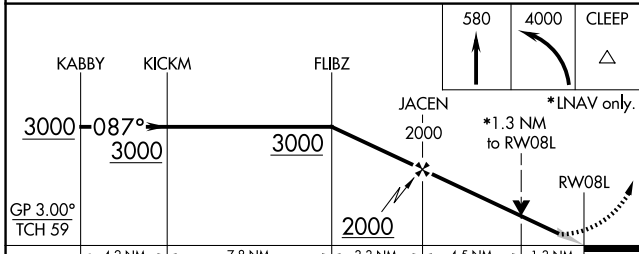
MISSED APPROACH: Climb to 580 then climbing left turn to 4000 direct CLEEP and hold.

D-ATIS <b>124.05</b>	HOUSTON APP CON <b>120.05 379.1 EAST</b> <b>124.35 316.15 WEST</b>	HOUSTON TOWER <b>120.72 290.2</b>	GND CON <b>121.7</b>	CLNC DEL <b>128.1</b>	CPDLC
-------------------------	--	--------------------------------------	-------------------------	--------------------------	-------

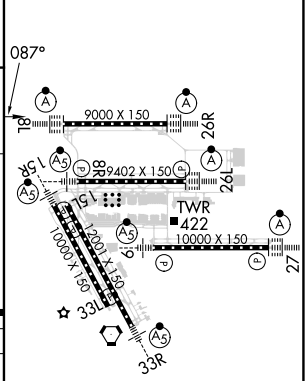


SC-5, 20 MAR 2025 to 17 APR 2025

SC-5, 20 MAR 2025 to 17 APR 2025



ELEV 96	<b>D</b> TDZE 95
---------	------------------



CATEGORY	A	B	C	D	E	
LPV DA	295/18		200 (200-½)			
LNAV/VNAV DA	486/40		391 (400-¾)			
LNAV MDA	580/24		485 (500-½)		580/50	485 (500-1)

TDZ/CL Rwy 8R, 8L, 15R, 26R, 26L, 27 and 33L  
HIRL all Rwy's