

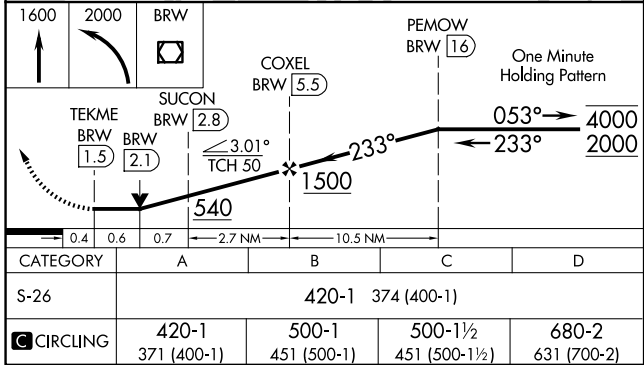
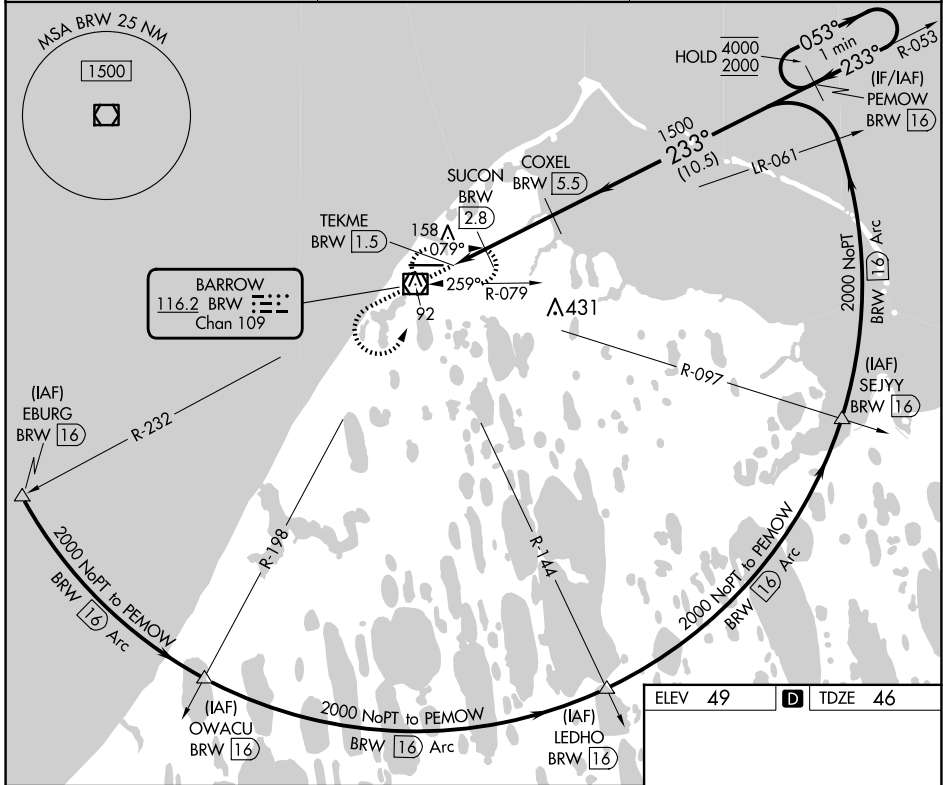
VOR/DME BRW 116.2 Chan 109	APP CRS 233°	Rwy Idg TDZE Apt Elev	5900 46 49
--	------------------------	-----------------------------	---------------------------------------

VOR RWY 26

WILEY POST-WILL ROGERS MEML (BRW)(PABR)

DME required.	MISSED APPROACH: Climb to 1600 then climbing left turn to 2000 direct BRW VOR/DME and hold, continue climb-in-hold to 2000.
<p>⚠ Circling NA for Cat A north of Rwy 8-26.</p>	

AFIS 132.15	ANCHORAGE CENTER 135.3 239.25	BARROW RADIO 123.6 (CTAF) 0
-----------------------	---	---------------------------------------



ELEV 49	TDZE 46
REIL Rwy 26 0 HIRL Rwy 8-26 0	

AK, 20 FEB 2025 to 17 APR 2025

AK, 20 FEB 2025 to 17 APR 2025

VOR RWY 26