

NDB/DME OLT 346	APP CRS 255°	Rwy Idg TDZE Apt Elev	5001 113 113
Chan 106 (115.9)			

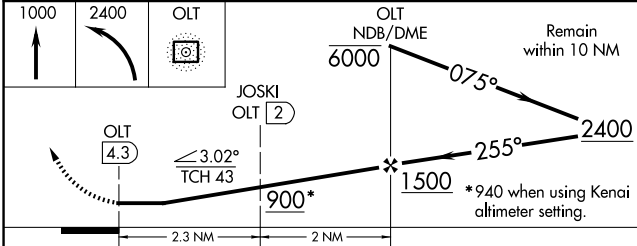
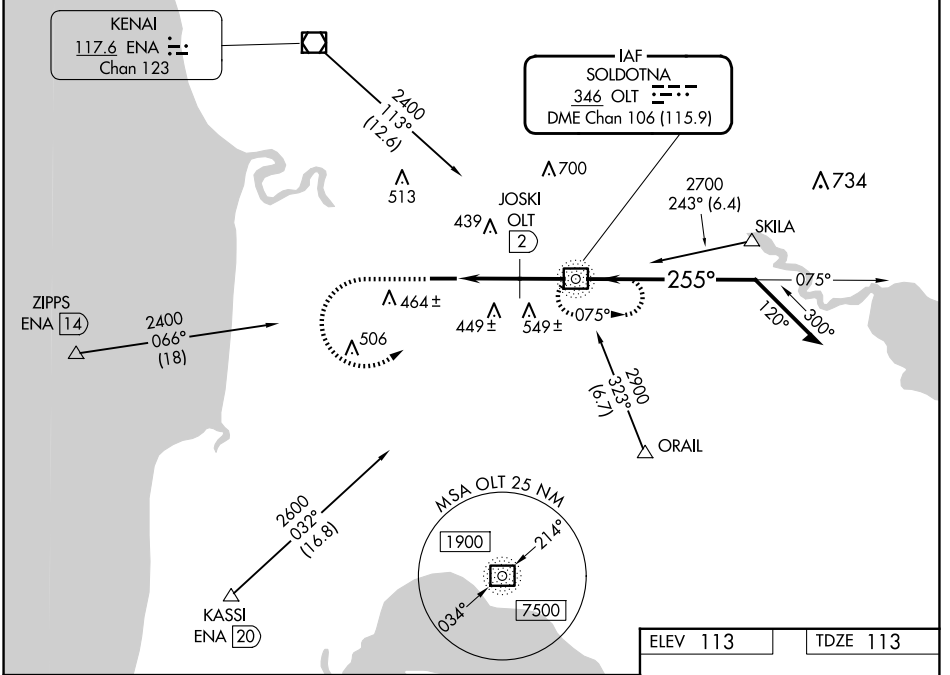
NDB RWY 25

SOLDOTNA (SXQ)(PASX)

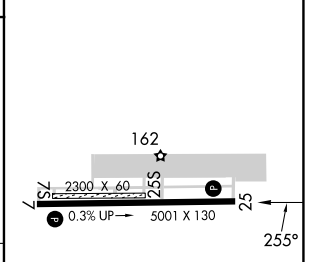
⚠ Circling NA to Rwy 7S and 25S. Circling Rwy 7 NA at night.

⚠ MISSED APPROACH: Climb to 1000 then climbing left turn to 2400 direct OLT NDB and hold.

AWOS-3P 135.45	ANCHORAGE CENTER 125.7 379.1	KENAI RADIO 122.35	CTAF 122.50
--------------------------	--	------------------------------	-----------------------



ELEV 113	TDZE 113
----------	----------



CATEGORY	A	B	C	D
S-25	900-1 787 (800-1)	900-1¼ 787 (800-1¼)	900-2½ 787 (800-2½)	787 (800-2½)
C CIRCLING	900-1 787 (800-1)	900-1¼ 787 (800-1¼)	900-2½ 787 (800-2½)	980-2¾ 867 (900-2¾)
JOSKI FIX MINIMUMS				
S-25	760-1 647 (700-1)	647 (700-1)	760-1⅞ 647 (700-1⅞)	647 (700-1⅞)
C CIRCLING	860-1 747 (800-1)	747 (800-1)	860-2¼ 747 (800-2¼)	980-2¾ 867 (900-2¾)

MIRL Rwy 7-25	0				
FAF to MAP 4.3 NM					
Knots	60	90	120	150	180
Min:Sec	4:18	2:52	2:09	1:43	1:26

AK, 20 FEB 2025 to 17 APR 2025

AK, 20 FEB 2025 to 17 APR 2025