

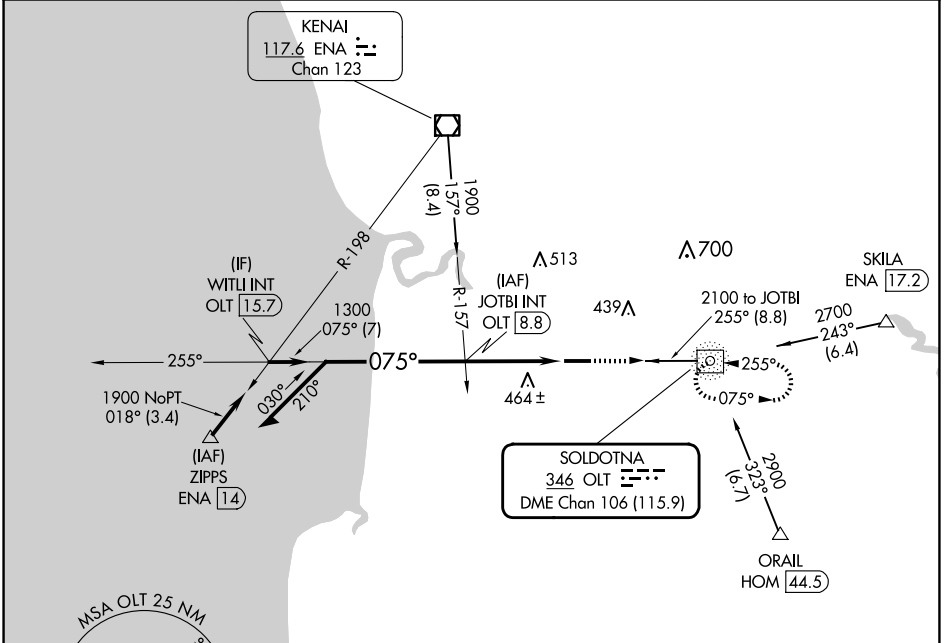
NDB/DME OLT 346	APP CRS 075°	Rwy Idg 5001
Chan 106 (115.9)		TDZE 102
		Apt Elev 113

NDB RWY 7
SOLDOTNA (SXQ)(PASX)

⚠ Circling NA to Rwys 7S and 25S. Straight-in Rwy 7 NA at night, Circling Rwy 7 NA at night. Rwy 7 helicopter visibility reduction below 1 SM NA.

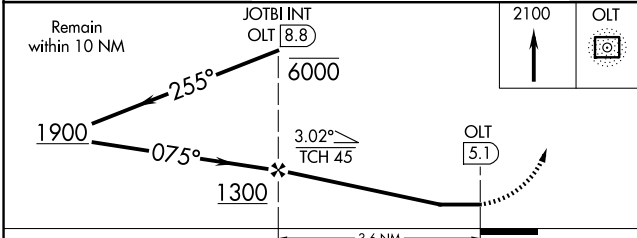
⚠ MISSED APPROACH: Climb to 2100 direct OLT NDB/DME and hold.

AWOS-3P 135.45	ANCHORAGE CENTER 125.7 379.1	KENAI RADIO 122.35	CTAF 122.5 0
--------------------------	--	------------------------------	------------------------

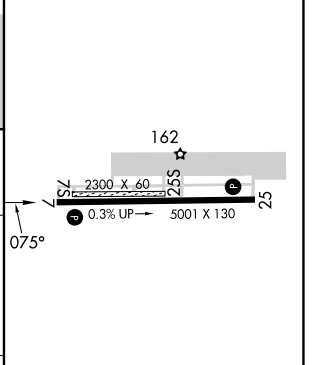


AK, 20 FEB 2025 to 17 APR 2025

AK, 20 FEB 2025 to 17 APR 2025



ELEV 113	TDZE 102
----------	----------



CATEGORY	A	B	C	D
S-7	860-1 758 (800-1)	860-1¼ 758 (800-1¼)	860-2½	758 (800-2½)
C CIRCLING	860-1 747 (800-1)	860-1¼ 747 (800-1¼)	860-2½ 747 (800-2½)	980-2¾ 867 (900-2¾)

MIRL Rwy 7-25 0					
FAF to MAP 3.6 NM					
Knots	60	90	120	150	180
Min:Sec	3:36	2:24	1:48	1:26	1:12