

# ILS or LOC RWY 18L

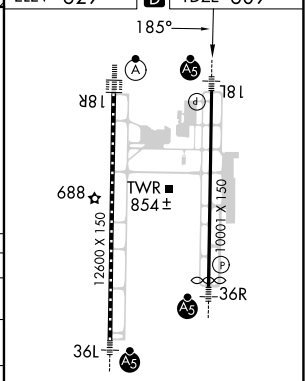
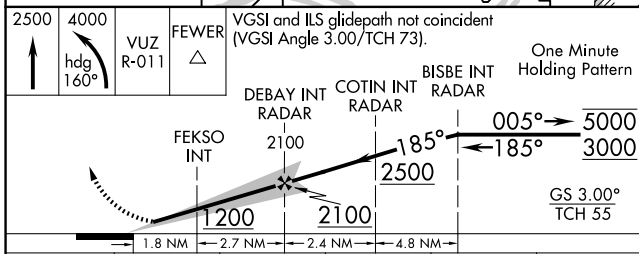
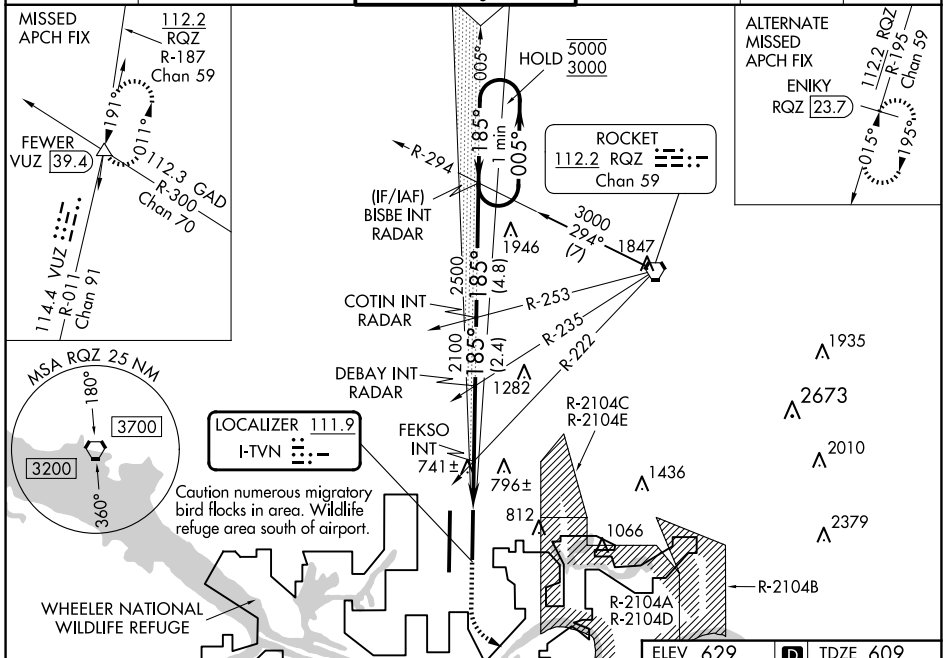
HUNTSVILLE INTL-CARL T JONES FLD (HSV)

LOC I-TVN <b>111.9</b>	APP CRS <b>185°</b>	Rwy Idg <b>9801</b>
		TDZE <b>609</b>
		Apt Elev <b>629</b>

**Simultaneous approach authorized. Circling NA for Cat C/D/E east of Rwy 18L-36R. For inop ALS, increase S-ILS 18L Cat E visibility to RVR 4000 and S-LOC 18L Cat E visibility to 1 1/4 SM; FEKSO Fix minimums increase S-LOC 18L Cat E visibility to RVR 6000. \* RVR 1800 authorized with use of FD or AP or HUD to DA.**

**MALS**  
MISSED APPROACH: Climb to 2500 then climbing left turn to 4000 on heading 160° and VUZ R-011 to FEWER INT/VUZ 39.4 DME and hold.

ATIS <b>121.25</b>	HUNTSVILLE APP CON * <b>125.6 354.1</b>	HUNTSVILLE TOWER * <b>127.6 (CTAF) 0 350.35</b>	GND CON <b>121.9 269.525</b>	CLNC DEL <b>120.35</b>	UNICOM <b>122.95</b>
-----------------------	--	--	---------------------------------	---------------------------	-------------------------



CATEGORY	A	B	C	D	E
S-ILS 18L *	809/24 200 (200-1/2)				
S-LOC 18L	1200/24	591 (600-1/2)	1200-1 1/4	591 (600-1 1/4)	
<b>CIRCLING</b>	1200-1	571 (600-1)	1200-1 3/4	1240-2	1260-2 1/4
FEKSO FIX MINIMUMS (DUAL VOR RECEIVERS REQUIRED)					
S-LOC 18L	1000/24	391 (400-1/2)	1000/35	391 (400-1/2)	
<b>CIRCLING</b>	1160-1	531 (600-1)	1160-1 1/2	1240-2	1260-2 1/4

TDZ/CL Rwy 18R and 36L  
HIRL Rwy 18L-36R and 18R-36L

FAF to MAP 4.5 NM

Knots	60	90	120	150	180
Min:Seq	4:30	3:00	2:15	1:48	1:30

# ILS or LOC RWY 18L

SE-4, 20 MAR 2025 to 17 APR 2025

SE-4, 20 MAR 2025 to 17 APR 2025