

| | | |
|---|------------------------|---|
| LOC/DME I-JJC 109.55 Chan 32 (Y) | APP CRS 005° | Rwy Idg 9801 TDZE 595 Apt Elev 629 |
|---|------------------------|---|

ILS or LOC RWY 36R

HUNTSVILLE INTL-CARL T JONES FLD (HSV)

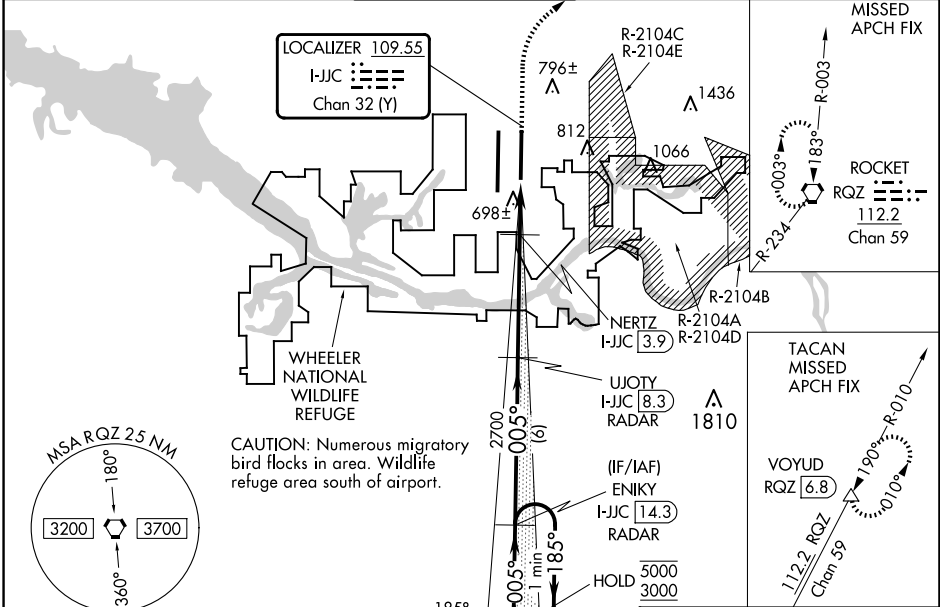
RADAR required for procedure entry. DME or RADAR required.

ASR Simultaneous approach authorized. For inop ALS, increase S-ILS 36R Cat E visibility to RVR 4000 and S-LOC 36R Cat C/D/E visibility to 1½ SM; NERTZ Fix minimums: increase S-LOC 36R Cat E visibility to RVR 6000. Circling NA for Cat C/D/E east of Rwy 18L-36R.

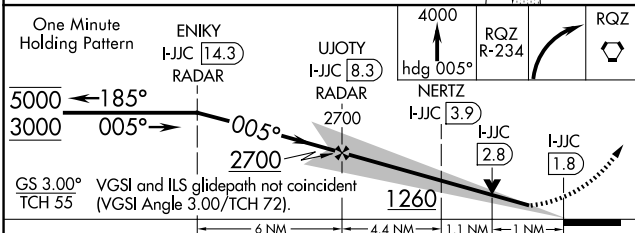


MISSED APPROACH: Climb to 4000 on heading 005° to intercept RQZ R-234 and right turn to RQZ VORTAC and hold, continue climb-in-hold to 4000. (TACAN aircraft continue climb to 5000 on RQZ VORTAC R-010 to VOYUD/RQZ 6.8 DME and hold north, left turn, 190° inbound, continue climb-in-hold to 5000).

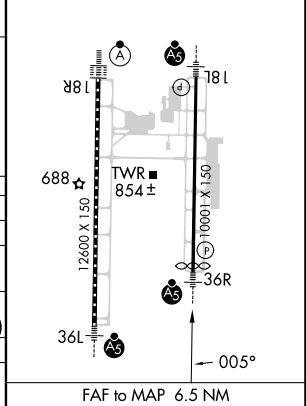
| | | | | | |
|-----------------------|--|--|---------------------------------|---------------------------|-------------------------|
| ATIS 121.25 | HUNTSVILLE APP CON ★ 125.6 354.1 | HUNTSVILLE TOWER ★ 127.6 (CTAF) 350.35 | GND CON 121.9 269.525 | CLNC DEL 120.35 | UNICOM 122.95 |
|-----------------------|--|--|---------------------------------|---------------------------|-------------------------|



| | |
|----------|----------|
| ELEV 629 | TDZE 595 |
|----------|----------|



TDZ/CL Rws 18R and 36L
HIRL Rws 18L-36R and 18R-36L



| CATEGORY | A | B | C | D | E |
|--------------------|--------------------|-------------|---------|--------|--------------|
| S-ILS 36R | 818/24 223 (200-½) | | | | |
| S-LOC 36R | 1260/24 | 665 (700-½) | 1260-1½ | | 665 (700-1½) |
| CIRCLING | 1260-1 | 631 (700-1) | 1260-1⅞ | 1260-2 | 1260-2¼ |
| NERTZ FIX MINIMUMS | | | | | |
| S-LOC 36R | 980/24 | 385 (400-½) | 980/35 | | 385 (400-⅝) |
| CIRCLING | 1160-1 | 531 (600-1) | 1160-1½ | 1240-2 | 1260-2¼ |

| | | | | | |
|---------|------|------|------|------|------|
| Knots | 60 | 90 | 120 | 150 | 180 |
| Min:Sec | 6:30 | 4:20 | 3:15 | 2:36 | 2:10 |

SE-4, 20 MAR 2025 to 17 APR 2025

SE-4, 20 MAR 2025 to 17 APR 2025