

LOC/DME I-SMF 111.1 Chan 48	APP CRS 168°	Rwy ldg 8598 TDZE 25 Apt Elev 27
--	------------------------	---

ILS RWY 17R (SA CAT I)

SACRAMENTO INTL (SMF)

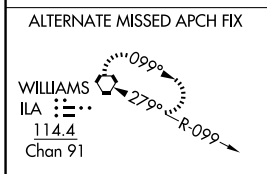
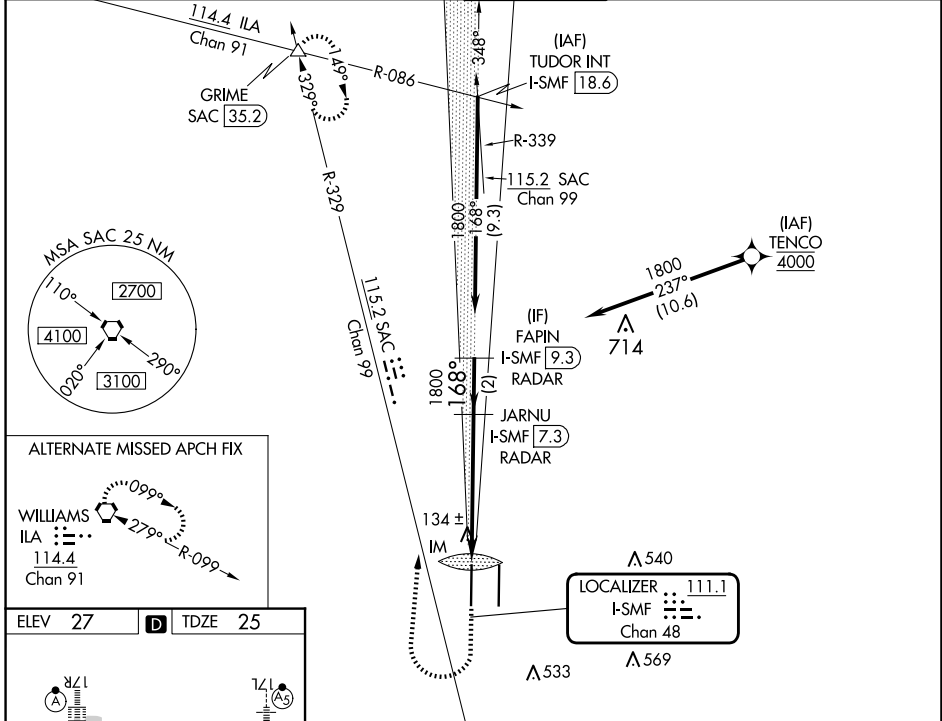
Aircraft not GPS equipped - RADAR required for procedure entry. DME or RADAR required. RNP APCH-GPS. From TENCO.

Simultaneous approach authorized. Requires specific OPSPEC, MSPEC, or LOA approval.

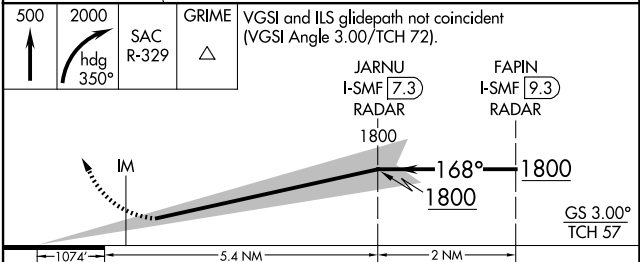
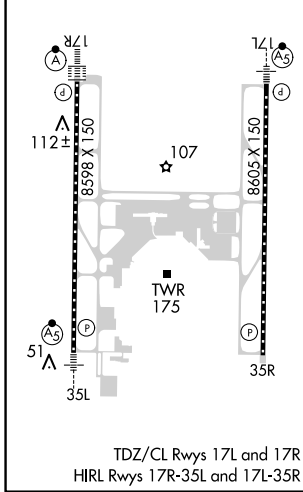
ALSF-2

MISSED APPROACH: Climb to 500 then climbing right turn to 2000 on heading 350° and SAC VORTAC R-329 to GRIME INT/SAC 35.2 DME and hold.

D-ATIS 126.75	NORCAL APP CON 125.4 259.1 (W-NE) 125.25 257.9 (SW) 127.4 317.5 (E-SE)	CAPITOL TOWER 125.7 256.7	GND CON 121.7 256.7	CLNC DEL 121.1 256.7	CPDLC
-------------------------	--	-------------------------------------	-------------------------------	--------------------------------	-------



ELEV 27	D	TDZE 25
---------	---	---------



CATEGORY	A	B	C	D
S-ILS 17R	RA 154/14 150 DA 175			

SA CATEGORY I ILS - SPECIAL AIRCREW & AIRCRAFT CERTIFICATION REQUIRED

SW-2, 20 MAR 2025 to 17 APR 2025

SW-2, 20 MAR 2025 to 17 APR 2025