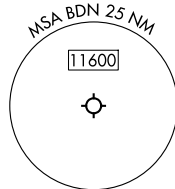


SEATTLE CENTER
126.15 269.475
CTAF
123.0



TAKEOFF MINIMUMS

Rwy 16: Standard with minimum climb of 260' per NM to 4600 or 4600-3 for VCOA.

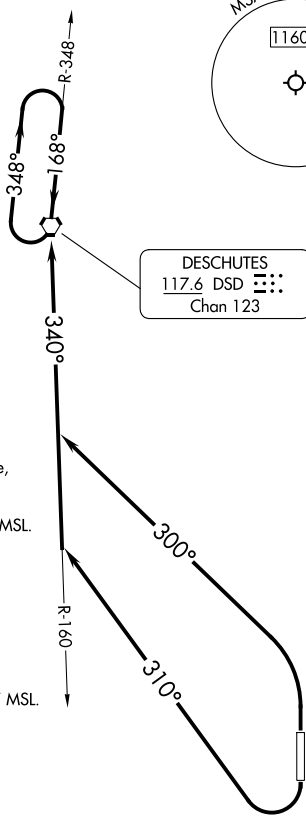
Rwy 34: Standard.

TAKEOFF OBSTACLE NOTES

Rwy 16: Vehicles on road, light poles beginning 0' from DER, 17' left of centerline, up to 3466' MSL.
 Light poles 9' from DER, 17' right of centerline, 1' AGL/3461' MSL.
 Vehicles on road 17' from DER, 361' left of centerline, 3467' MSL.
 Terrain 27' from DER, 197' right of centerline, 3463' MSL.
 Terrain beginning 36' from DER, 484' right of centerline, up to 3469' MSL.
 Tree 74' from DER, 456' left of centerline, 35' AGL/3487' MSL.
 Trees beginning 196' from DER, 465' left of centerline, up to 45' AGL/3497' MSL.
 Tree, catenary wires beginning 322' from DER, 328' left of centerline, up to 3503' MSL.
 Fence 343' from DER, 588' right of centerline, 3' AGL/3471' MSL.
 Trees beginning 1011' from DER, 5' right of centerline, up to 3500' MSL.
 Trees beginning 1049' from DER, 773' right of centerline, up to 37' AGL/3503' MSL.
 Poles, tree beginning 1214' from DER, 109' right of centerline, up to 38' AGL/3504' MSL.
 Trees beginning 1733' from DER, 927' right of centerline, up to 54' AGL/3526' MSL.
 Tree 2142' from DER, 876' right of centerline, 59' AGL/3528' MSL.
 Tree 2688' from DER, 710' right of centerline, 3541' MSL.
 Trees beginning 2765' from DER, 503' left of centerline, up to 3572' MSL.

Rwy 34: Terrain, light poles beginning 0' from DER, 17' left of centerline, up to 3405' MSL.
 Light poles 9' from DER, 17' right of centerline, 1' AGL/3404' MSL.
 Terrain, vegetation beginning 41' from DER, 443' left of centerline, up to 3408' MSL.
 Tree 52' from DER, 412' right of centerline, 3424' MSL.
 Trees beginning 93' from DER, 252' right of centerline, up to 3427' MSL.
 Tree 311' from DER, 531' left of centerline, 3434' MSL.
 Trees, vehicles on road beginning 331' from DER, 298' left of centerline, up to 3435' MSL.
 Tree 373' from DER, 581' right of centerline, 37' AGL/3428' MSL.
 Trees beginning 466' from DER, 236' right of centerline, up to 42' AGL/ 3429' MSL.
 Trees beginning 694' from DER, 200' left of centerline, up to 31' AGL/3436' MSL.
 Trees beginning 925' from DER, 175' left of centerline, up to 39' AGL/3442' MSL.

DESCHUTES
117.6 DSD
Chan 123



NOTE: Chart not to scale.

DEPARTURE ROUTE DESCRIPTION

TAKEOFF RUNWAY 16: Climbing right turn heading 310° to intercept DSD R-160 to DSD VORTAC, thence. . . .

TAKEOFF RUNWAY 34: Climbing left turn heading 300° to intercept DSD R-160 to DSD VORTAC, thence. . . .

. . . .Climb in DSD VORTAC holding pattern to cross DSD VORTAC at or above MEA/MCA for route of flight.

VCOA RUNWAY 16: Obtain ATC approval for VCOA when requesting IFR clearance. Climb in visual conditions to cross Bend Muni Airport at or above 7900 before proceeding on course.

NW-1, 20 MAR 2025 to 17 APR 2025

NW-1, 20 MAR 2025 to 17 APR 2025