

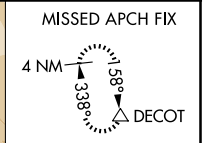
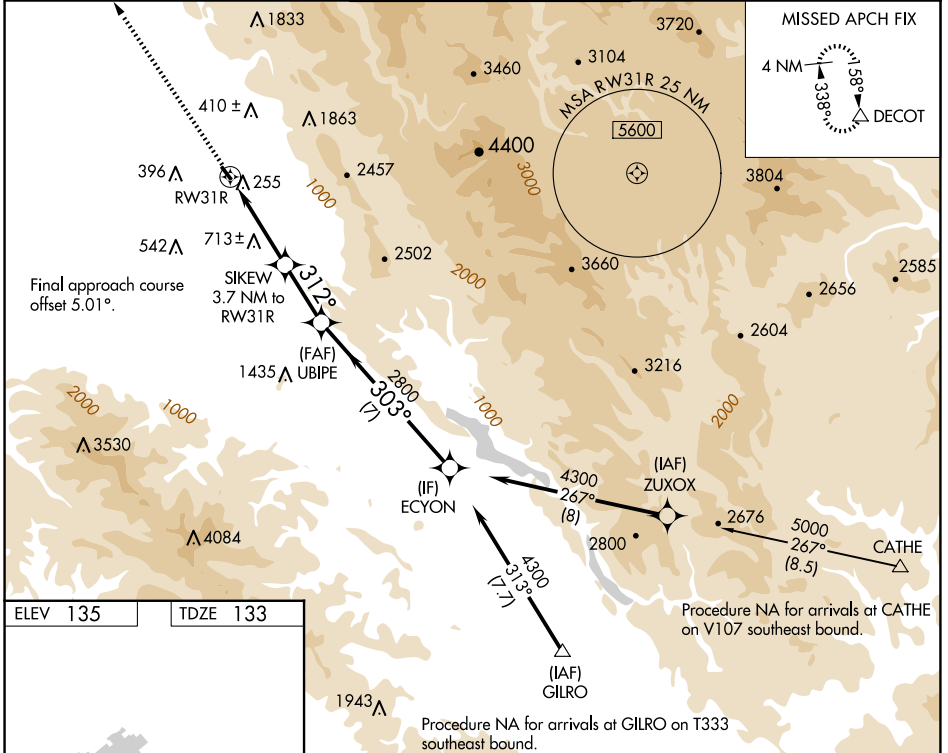
APP CRS <b>312°</b>	Rwy Idg <b>2690</b>
	TDZE <b>133</b>
	Apt Elev <b>135</b>

# RNAV (GPS) Y RWY 31R

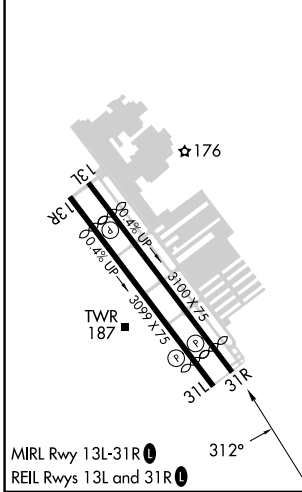
REID-HILLVIEW OF SANTA CLARA COUNTY (R.H.V)

RNP APCH.	<p>▼ Circling Rwy 31L NA at night. Rwy 31R helicopter visibility reduction below 3/4 SM NA. VDP NA when using Norman Y Mineta San Jose Intl altimeter setting. Circling east of Rwy 13L-31R NA at night. When control tower closed, use Norman Y Mineta San Jose Intl altimeter setting and increase all MDAs 40 feet.</p>	MISSED APPROACH: Climb to 4000 direct DECOY and hold.
-----------	--	---

ATIS <b>125.2</b>	NORCAL APP CON <b>120.1 290.25</b>	REID-HILLVIEW TOWER * (Rwy 13L-31R) (Rwy 13R-31L) <b>119.8 (CTAF) 126.1</b>	GND CON <b>121.65</b>	UNICOM <b>122.95</b>
----------------------	---------------------------------------	---	--------------------------	-------------------------



ELEV 135	TDZE 133
----------	----------



4000	↑	DECOY	△
RWY 31R		SIKEW 3.7 NM to RWY 31R	UBIPE
2.6 NM	1.1 NM	2.5 NM	7 NM
1760	312°	2800	303°
4300	(IF) EYCYON	(IAF) ZUXOX	(IAF) GILRO
Procedure NA for arrivals at EYCYON on T333 southeast bound.		Procedure NA for arrivals at ZUXOX on V107 southeast bound.	
4000	DECOY	ECYON	
CATEGORY	A	B	C
LNAV MDA	1300-1 1/4 1167 (1200-1 1/4)	1300-1 1/2 1167 (1200-1 1/2)	NA
CIRCLING	1300-1 1/4 1165 (1200-1 1/4)	1300-1 1/2 1165 (1200-1 1/2)	NA

SW-2, 20 MAR 2025 to 17 APR 2025

SW-2, 20 MAR 2025 to 17 APR 2025