

APP CRS	Rwy Idg	<b>2999</b>
<b>096°</b>	TDZE	<b>8</b>
	Apt Elev	<b>9</b>

# RNAV (GPS) RWY 10R

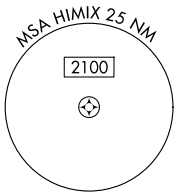
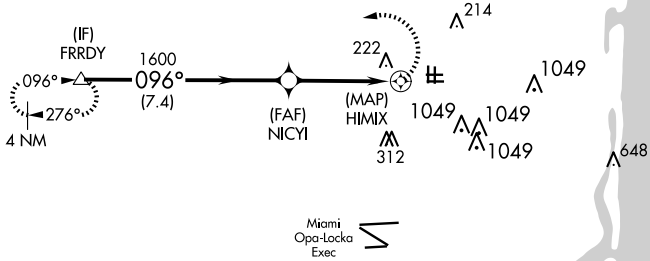
NORTH PERRY (HWO)

RNP APCH.  
 ▼ Rwy 10R helicopter visibility reduction below 3/4 SM NA.  
 Circling Rwy 1R, 10L, 19L, 28R NA at night.  
 Circling NA for Cat C south of Rwy 10R-28L.

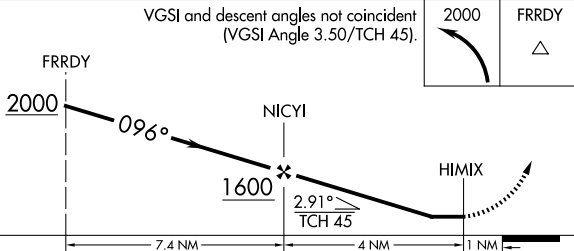
MISSED APPROACH: Climbing left turn to 2000 direct FRRDY and hold.

ATIS <b>135.475</b>	MIAMI APP CON <b>128.6 306.975</b>	<b>NORTH PERRY TOWER*</b> <b>132.1 (CTAF) 254.3</b>	GND CON <b>120.45 254.3</b>	UNICOM <b>122.95</b>
------------------------	---------------------------------------	--	--------------------------------	-------------------------

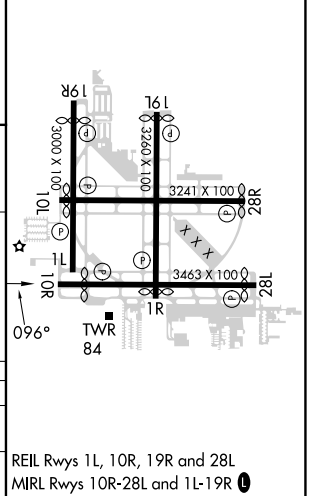
Procedure NA for arrivals at FRRDY on V157-511-599 northwest bound.



VGSI and descent angles not coincident (VGSI Angle 3.50/TCH 45).



ELEV	<b>9</b>	TDZE	<b>8</b>
------	----------	------	----------



CATEGORY	A	B	C	D
RNAV MDA	480-1 1/4	472 (500-1 1/4)	480-1 3/8 472 (500-1 3/8)	NA
CIRCLING	560-1 1/4	551 (600-1 1/4)	560-1 1/2 551 (600-1 1/2)	NA

SE-3, 20 MAR 2025 to 17 APR 2025

SE-3, 20 MAR 2025 to 17 APR 2025