

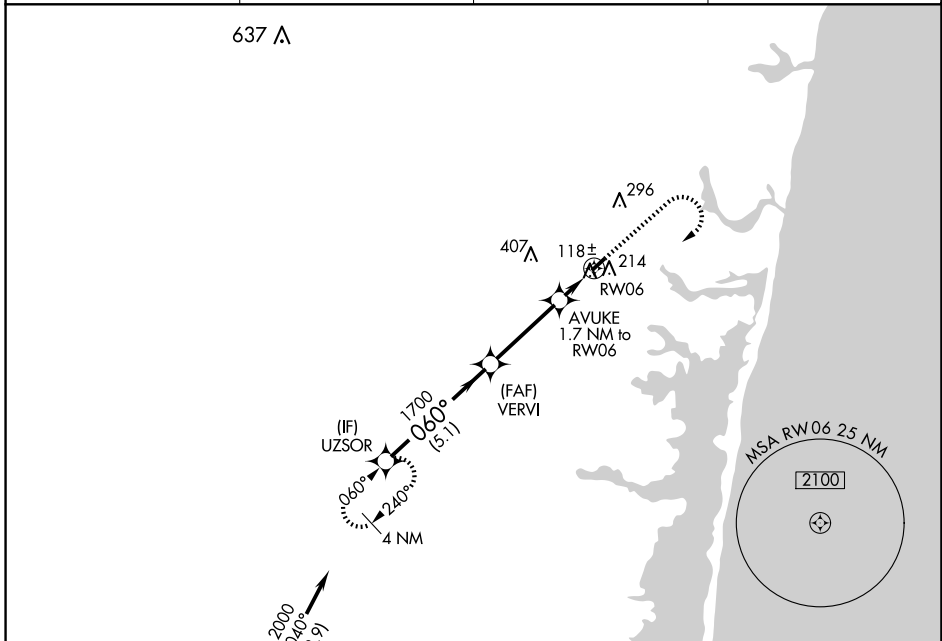
WAAS CH <b>49038</b> <b>W06A</b>	APP CRS <b>060°</b>	Rwy Idg TDZE <b>41</b> Apt Elev <b>42</b>	<b>2726</b>
--	------------------------	---	-------------

# RNAV (GPS) RWY 6

LAKEWOOD (N12)

RNP APCH - GPS.	MISSED APPROACH: Climb to 1000 then climbing right turn to 2000 direct UZSOR and hold.
<p>▼ Circling Rwy 24 NA at night.</p> <p>▲ NA Rwy 6 helicopter visibility reduction below 3/4 SM NA.</p>	

AWOS-AV <b>122.8</b>	MC GUIRE APP CON <b>126.475 363.8</b>	GCO <b>121.725</b>	UNICOM <b>122.8 (CTAF)</b>
-------------------------	--	-----------------------	-------------------------------

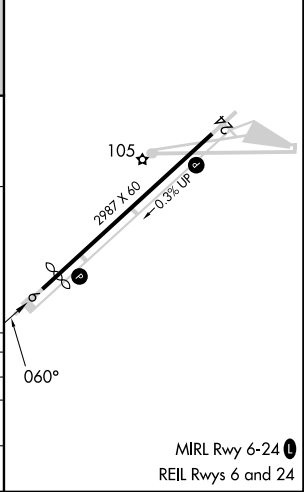
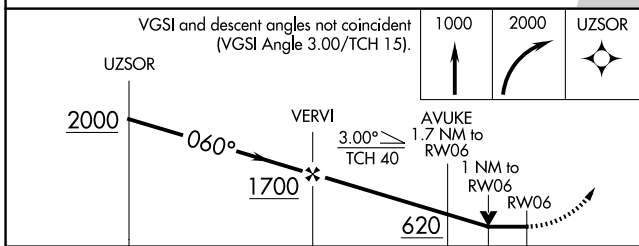


NE-2, 20 MAR 2025 to 17 APR 2025

NE-2, 20 MAR 2025 to 17 APR 2025

Procedure NA for arrival on CYN VORTAC  
airway radials 046 CW 100.

ELEV <b>42</b>	TDZE <b>41</b>
----------------	----------------



	5.1 NM	3.4 NM	0.7	1 NM
CATEGORY	A	B	C	D
LP MDA	380-1	339 (400-1)		NA
LNAV MDA	580-1	539 (600-1)		NA
◻ CIRCLING	580-1 538 (600-1)	620-1 578 (600-1)		NA