

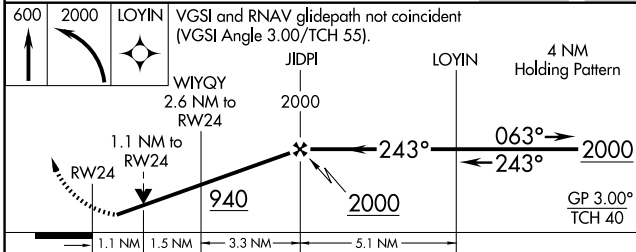
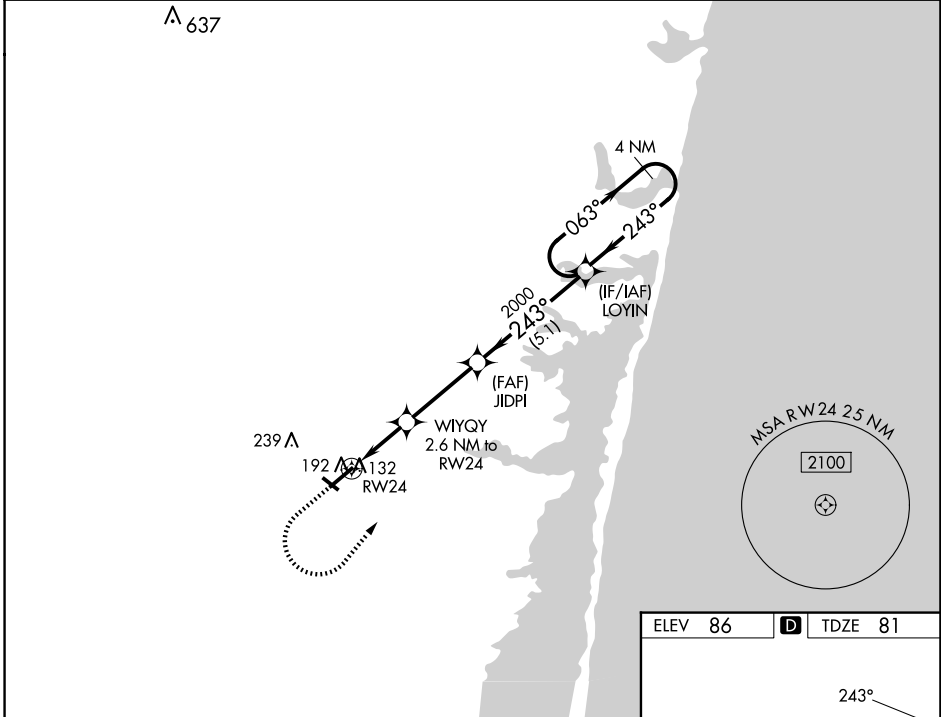
WAAS CH 86433 W24A	APP CRS 243°	Rwy Idg TDZE Apt Elev	5835 81 86
--	------------------------	-----------------------------	---------------------------------------

RNAV (GPS) RWY 24

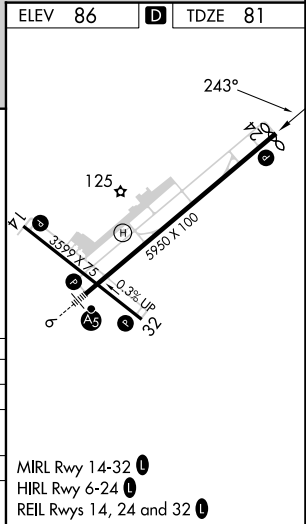
OCEAN COUNTY (MJX)

RNP APCH - GPS.	MISSED APPROACH: Climb to 600 then climbing left turn to 2000 direct to LOYIN and hold.
-----------------	---

AWOS-3PT 119.875	MC GUIRE APP CON 126.475 363.8	UNICOM 122.7 (CTAF)
----------------------------	--	-------------------------------



CATEGORY	DA	A	B	C	D
LPV	DA		331-3/4	250 (300-3/4)	
LNAV/VNAV	DA		358-7/8	277 (300-7/8)	
LNAV	MDA		460-1	379 (400-1)	
CIRCLING		540-1	560-1	580-1 1/2	700-2
		454 (500-1)	474 (500-1)	494 (500-1 1/2)	614 (700-2)



MIRL Rwy 14-32
HIRL Rwy 6-24
REIL Rwy 14, 24 and 32

NE-2, 20 MAR 2025 to 17 APR 2025

NE-2, 20 MAR 2025 to 17 APR 2025