

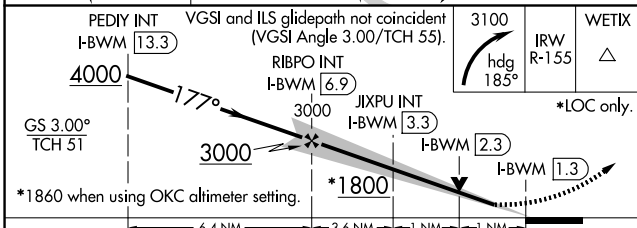
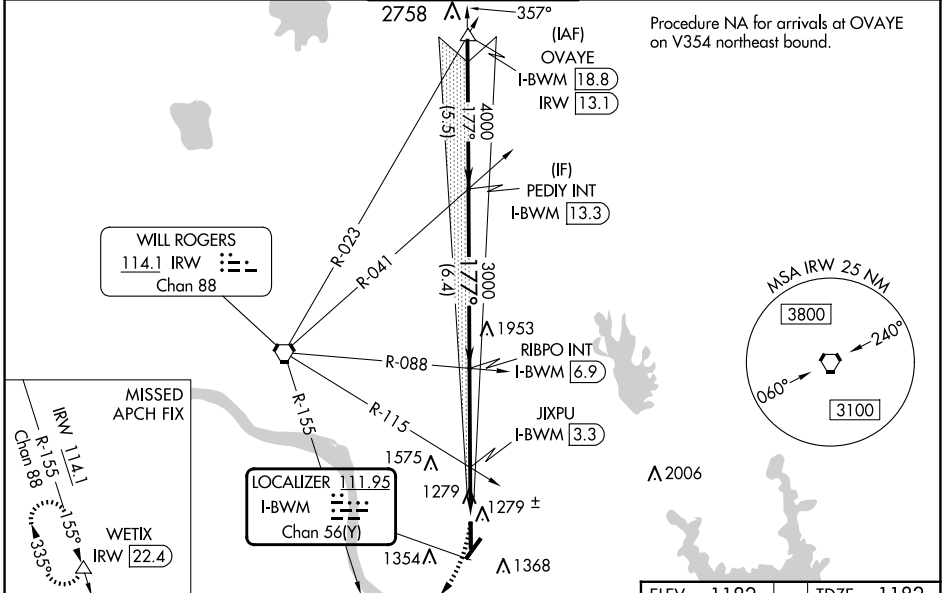
LOC/DME I-BWMM 111.95 Chan 56(Y)	APP CRS 177°	Rwy Idg 5199 TDZE 1182 Apt Elev 1182
--	------------------------	---

ILS or LOC RWY 18

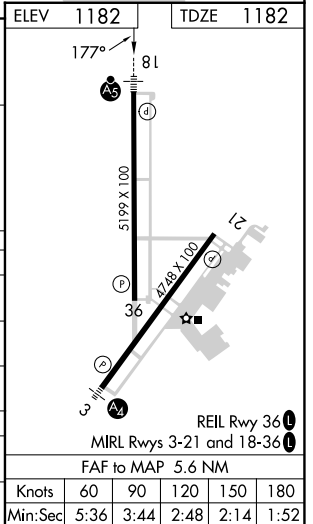
UNIVERSITY OF OKLAHOMA WESTHEIMER (OUN)

DME required.	MALSR	MISSED APPROACH: Climbing right turn to 3100 on heading 185° and IRW VORTAC R-155 to WETIX/IRW VORTAC 22.4 DME and hold.
---------------	-------	--

AWOS-3PT 119.55	OKE CITY APP CON 120.45 288.325	WESTHEIMER TOWER★ 118.0 (CTAF) 0	GND CON 121.6	UNICOM 122.95
---------------------------	---	--	-------------------------	-------------------------



CATEGORY	A	B	C	D
S-ILS 18		1382-1/2	200 (200-1/2)	
S-LOC 18	1800-1/2	618 (700-1/2)	1800-13/8	618 (700-13/8)
C CIRCLING	1800-1	618 (700-1)	1940-21/4	1940-21/2
JIXPU FIX MINIMUMS (DUAL VOR RECEIVERS OR DME REQUIRED)				
S-LOC 18	1540-1/2	358 (400-1/2)	1540-5/8	358 (400-5/8)
C CIRCLING	1660-1	478 (500-1)	1940-21/4	1940-21/2



SC-1, 20 MAR 2025 to 17 APR 2025

SC-1, 20 MAR 2025 to 17 APR 2025