

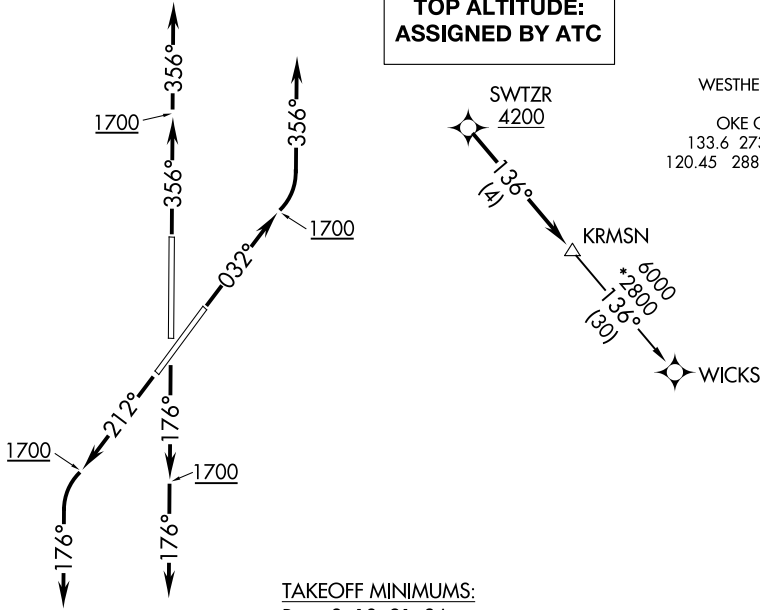
(KRMSN4.KRMSN) 23166

KRMSN FOUR DEPARTURE (RNAV)

UNIVERSITY OF OKLAHOMA WESTHEIMER (OUN)
AL-5672 (FAA) NORMAN, OKLAHOMA

**TOP ALTITUDE:
ASSIGNED BY ATC**

AWOS-3PT 119.55
GND CON 121.6
WESTHEIMER TOWER ★ 118.0
OKE CITY DEP CON 133.6 273.52 (NORTH)
120.45 288.325 (SOUTH)



TAKEOFF MINIMUMS:

Rwys 3, 18, 21, 36:

Standard with minimum climb of 500' per NM to 1700.

- NOTE: RADAR required.
- NOTE: DME/DME/IRU or GPS required.
- NOTE: RNAV 1.

NOTE: Chart not to scale.

DEPARTURE ROUTE DESCRIPTION

TAKEOFF RUNWAY 3: Climb on heading 032° to 1700, then left turn heading 356° or as assigned by ATC, expect RADAR vectors to cross SWTZR at or above 4200, thence . . .

TAKEOFF RUNWAY 18: Climb on heading 176° to 1700, then heading 176° or as assigned by ATC, expect RADAR vectors to cross SWTZR at or above 4200, thence . . .

TAKEOFF RUNWAY 21: Climb on heading 212° to 1700, then left turn heading 176° or as assigned by ATC, expect RADAR vectors to cross SWTZR at or above 4200, thence . . .

TAKEOFF RUNWAY 36: Climb on heading 356° to 1700, then heading 356° or as assigned by ATC, expect RADAR vectors to cross SWTZR at or above 4200, thence . . .

. . . on track 136° to KRMSN, then on (transition). Maintain ATC assigned altitude. Expect filed altitude 10 minutes after departure.

WICKS TRANSITION (KRMSN4.WICKS)

KRMSN FOUR DEPARTURE (RNAV)
(KRMSN4.KRMSN) 07OCT21

NORMAN, OKLAHOMA
UNIVERSITY OF OKLAHOMA WESTHEIMER (OUN)

SC-1, 20 MAR 2025 to 17 APR 2025

SC-1, 20 MAR 2025 to 17 APR 2025