

| | | |
|---|------------------------|---|
| LOC/DME I-PHY 111.1 Chan 48 | APP CRS 033° | Rwy Idg 4748 TDZE 1177 Apt Elev 1182 |
|---|------------------------|---|

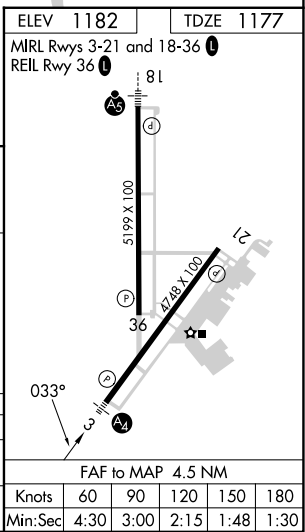
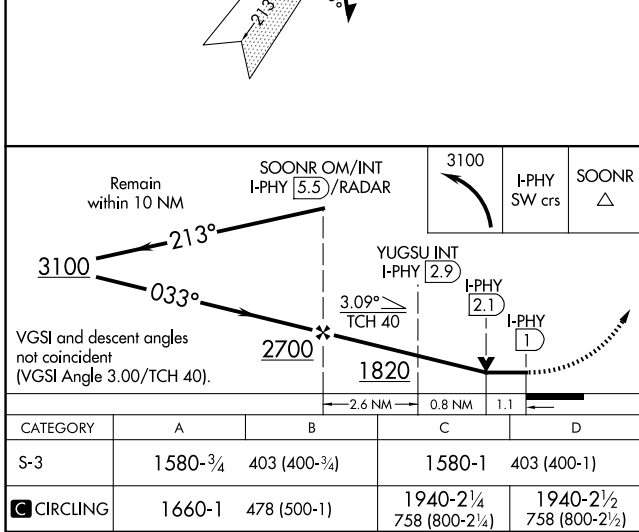
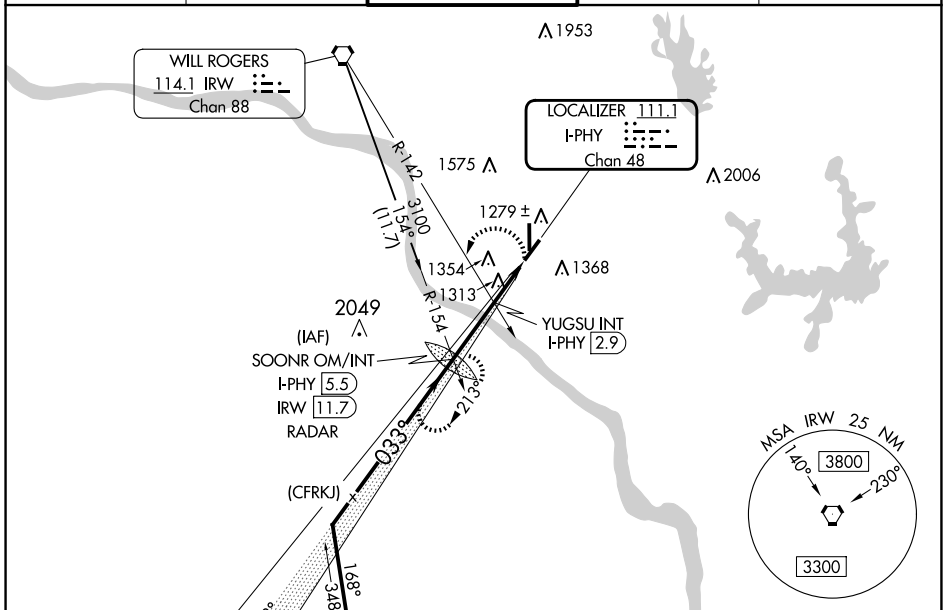
LOC RWY 3

UNIVERSITY OF OKLAHOMA WESTHEIMER (OUN)

⚠ When local altimeter setting not received, use OKC Will Rogers Intl altimeter setting and increase all MDA 60 feet; increase S-3 Cat C/D visibility ¼ mile, Circling Cat C/D ¼ mile. For inop MALS increase S-3 Cat C/D visibility to 1¾ mile. For inop MALS when using OKC Will Rogers Intl altimeter setting, increase S-3 Cat C/D visibility to 1¾ mile. Circling NA southeast of Rwy 3 and 21.

MALS MISSED APPROACH: Climbing left turn to 3100 on I-PHY SW course to SOONR OM/INT/I-PHY 5.5 DME/RADAR and hold, continue climb-in-hold to 3100.

| | | | | |
|---------------------------|---|--|-------------------------|-------------------------|
| AWOS-3PT 119.55 | OKE CITY APP CON 120.45 288.325 | WESTHEIMER TOWER* 118.0 (CTAF) | GND CON 121.6 | UNICOM 122.95 |
|---------------------------|---|--|-------------------------|-------------------------|



SC-1, 20 MAR 2025 to 17 APR 2025

SC-1, 20 MAR 2025 to 17 APR 2025