

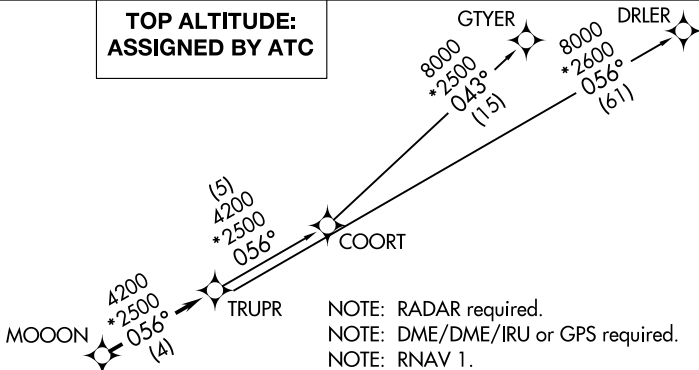
(TRUPR3.TRUPR) 23166

TRUPR THREE DEPARTURE (RNAV)

UNIVERSITY OF OKLAHOMA WESTHEIMER (OUN)
AL-5672 (FAA) NORMAN, OKLAHOMA

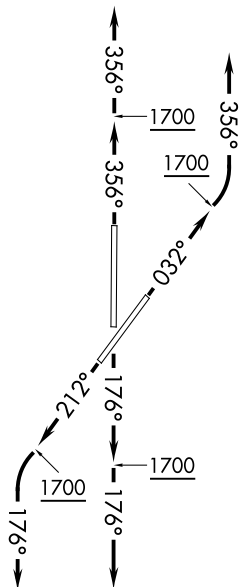
AWOS-3PT
119.55
GND CON
121.6
WESTHEIMER TOWER *
118.0
OKE CITY DEP CON
120.45 288.325

**TOP ALTITUDE:
ASSIGNED BY ATC**



TAKEOFF MINIMUMS

Rwys 3, 18, 21, 36: Standard with minimum climb of 500' per NM to 1700.



NOTE: Chart not to scale.

DEPARTURE ROUTE DESCRIPTION

TAKEOFF RUNWAY 3: Climb on heading 032° to 1700, then left turn heading 356° or as assigned by ATC, expect RADAR vectors to MOOON, thence . . .

TAKEOFF RUNWAY 18: Climb on heading 176° to 1700, then heading 176° or as assigned by ATC, expect RADAR vectors to MOOON, thence . . .

TAKEOFF RUNWAY 21: Climb on heading 212° to 1700, then left turn heading 176° or as assigned by ATC, expect RADAR vectors to MOOON, thence . . .

TAKEOFF RUNWAY 36: Climb on heading 356° to 1700, then heading 356° or as assigned by ATC, expect RADAR vectors to MOOON, thence . . .

. . . on track 056° to TRUPR, then on (transition). Maintain 3000 or as assigned by ATC. Expect filed altitude 10 minutes after departure.

COORT TRANSITION (TRUPR3.COORT)

DRLER TRANSITION (TRUPR3.DRLER)

GTYER TRANSITION (TRUPR3.GTYER)

TRUPR THREE DEPARTURE (RNAV)

(TRUPR3.TRUPR) 07DEC17

NORMAN, OKLAHOMA
UNIVERSITY OF OKLAHOMA WESTHEIMER (OUN)

SC-1, 20 MAR 2025 to 17 APR 2025

SC-1, 20 MAR 2025 to 17 APR 2025