

RNAV (GPS) RWY 19

BURNET MUNI/KATE CRADDOCK FLD (BMQ)

APP CRS 193°	Rwy Idg TDZE Apt Elev	5001 1283 1283
------------------------	-----------------------------	---

RNP APCH - GPS.

▼ Rwy 19 helicopter visibility reduction below 3/4 SM NA. When local altimeter setting not received, use RYW altimeter setting and increase all MDAs 60 feet and LNAV Cat C visibility 1/8 SM.

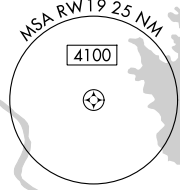
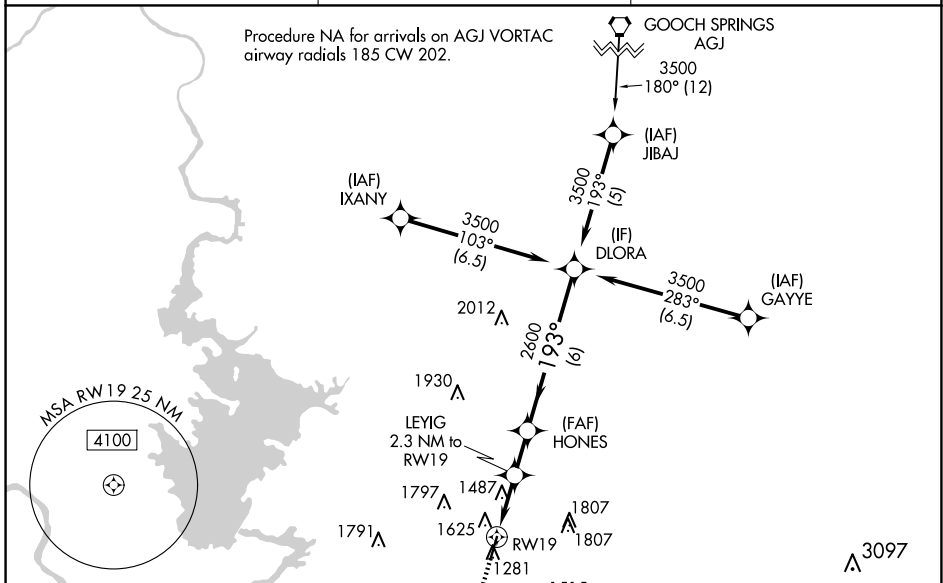
▲

MISSED APPROACH: Climb to 3500 direct SUBIE and hold.

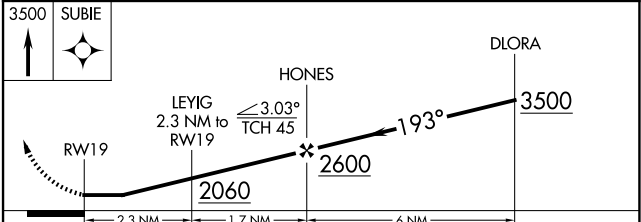
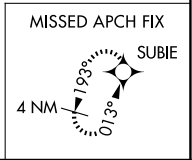
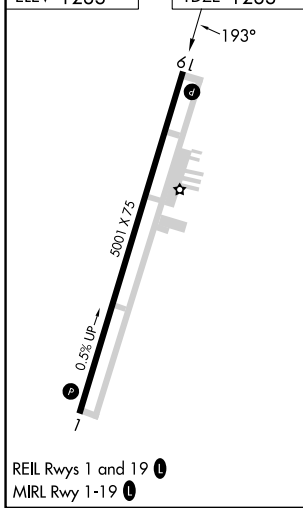
ASOS
119.925

HOUSTON CENTER
132.35 317.5

UNICOM
122.8 (CTAF) 0



ELEV 1283	TDZE 1283
-----------	-----------



CATEGORY	A	B	C	D
LNAV MDA	1940-1	657 (700-1)	1940-1 7/8 657 (700-1 7/8)	NA

BURNET, TEXAS
Amdt 1 31OCT24

BURNET MUNI/KATE CRADDOCK FLD (BMQ)
30°44'N-98°14'W
RNAV (GPS) RWY 19

SC-3, 20 MAR 2025 to 17 APR 2025

SC-3, 20 MAR 2025 to 17 APR 2025