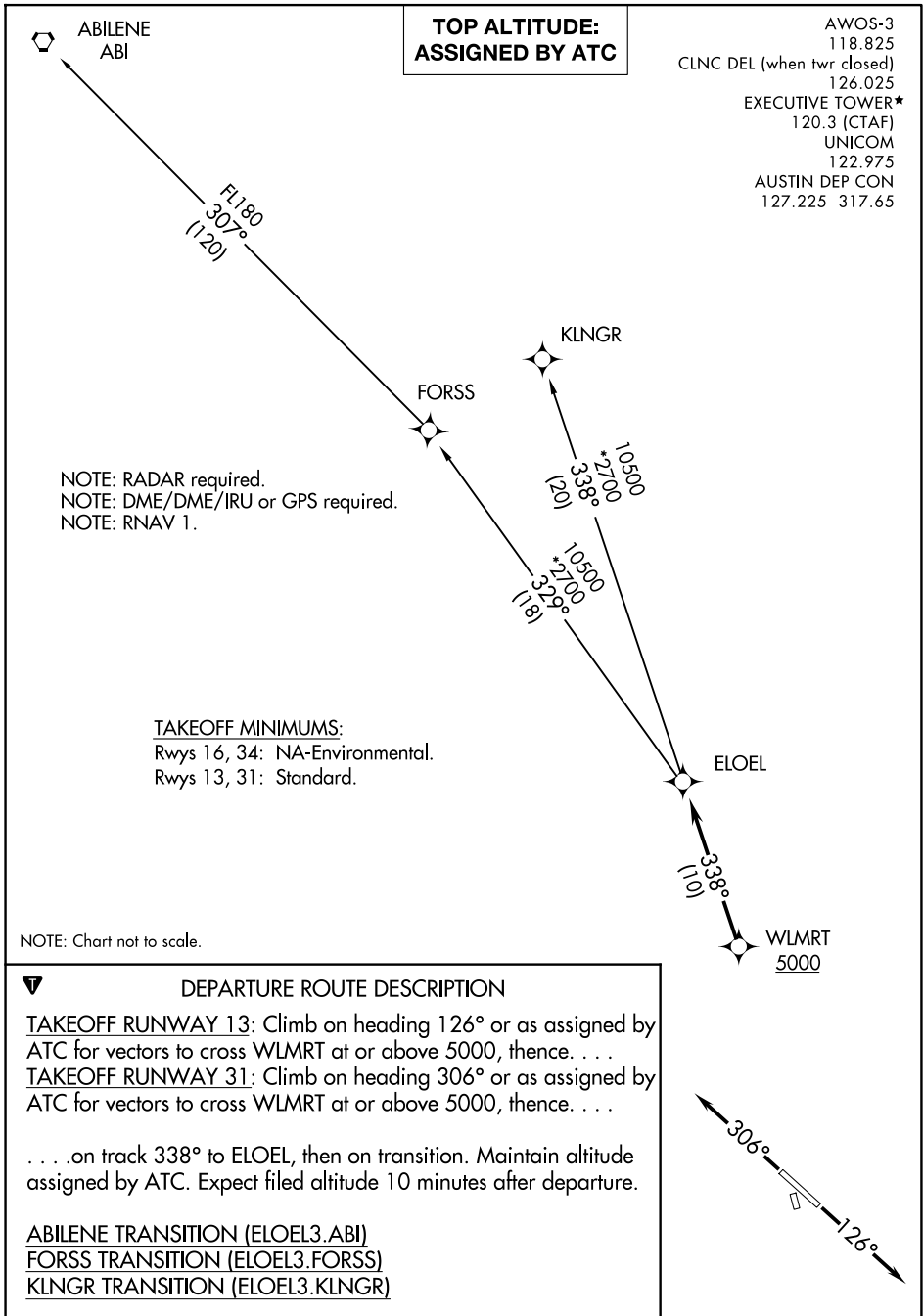


ELOEL THREE DEPARTURE (RNAV)

AUSTIN, TEXAS



**TOP ALTITUDE:
ASSIGNED BY ATC**

AWOS-3
118.825
CLNC DEL (when twr closed)
126.025
EXECUTIVE TOWER*
120.3 (CTAF)
UNICOM
122.975
AUSTIN DEP CON
127.225 317.65

NOTE: RADAR required.
NOTE: DME/DME/IRU or GPS required.
NOTE: RNAV 1.

TAKEOFF MINIMUMS:
Rwys 16, 34: NA-Environmental.
Rwys 13, 31: Standard.

NOTE: Chart not to scale.

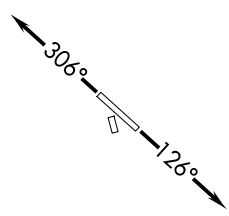
DEPARTURE ROUTE DESCRIPTION

TAKEOFF RUNWAY 13: Climb on heading 126° or as assigned by ATC for vectors to cross WLMRT at or above 5000, thence. . . .

TAKEOFF RUNWAY 31: Climb on heading 306° or as assigned by ATC for vectors to cross WLMRT at or above 5000, thence. . . .

. . . .on track 338° to ELOEL, then on transition. Maintain altitude assigned by ATC. Expect filed altitude 10 minutes after departure.

ABILENE TRANSITION (ELOEL3.ABI)
FORSS TRANSITION (ELOEL3.FORSS)
KLNGR TRANSITION (ELOEL3.KLNGR)



SC-3, 20 MAR 2025 to 17 APR 2025

SC-3, 20 MAR 2025 to 17 APR 2025

ELOEL THREE DEPARTURE (RNAV)

(ELOEL3.ELOEL) 22APR21

AUSTIN, TEXAS
AUSTIN EXEC (EDC)