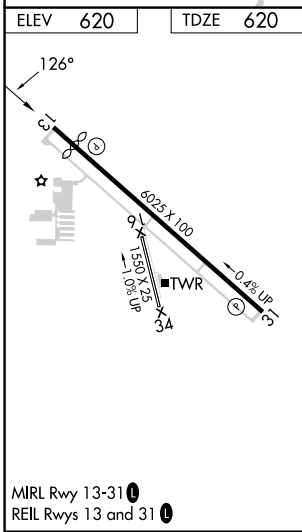
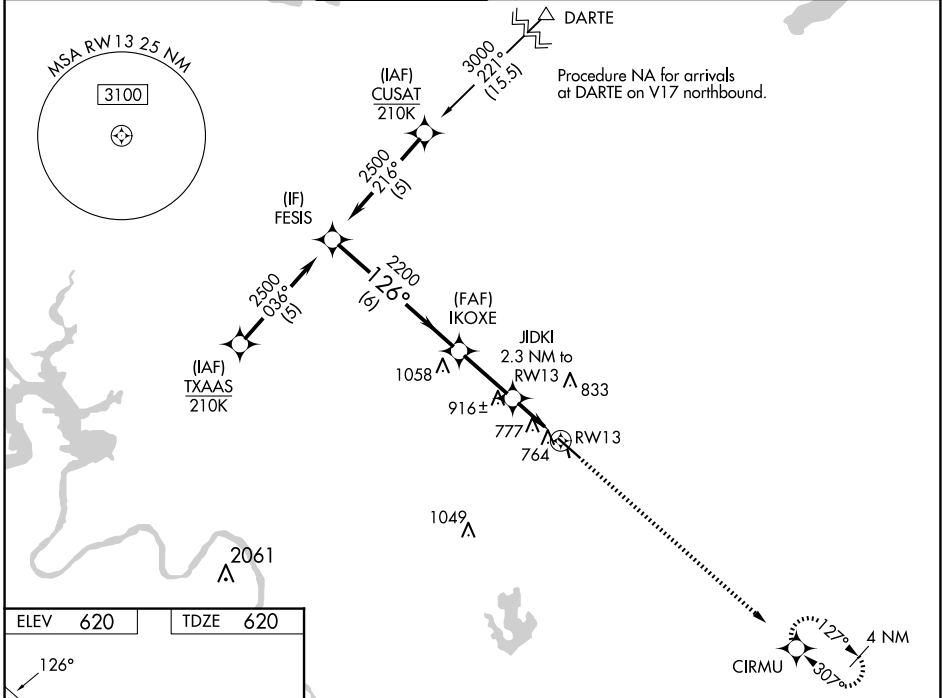


WAAS CH 63116 W13A	APP CRS 126°	Rwy Idg TDZE Apt Elev	5425 620 620
--	------------------------	-----------------------------	---

RNAV (GPS) RWY 13

AUSTIN EXEC (EDC)

RNP APCH - GPS.		<p>⚠ Circling NA to Rwy 16 and 34. Rwy 13 helicopter visibility reduction below $\frac{3}{4}$ SM NA. For uncompensated Baro-VNAV systems, LNAV/VNAV NA below -16°C or above 54°C.</p>		<p>MISSED APPROACH: Climb to 2200 direct CIRMU and hold.</p>	
AWOS-3 118.825	AUSTIN APP CON 127.225 317.65	EXECUTIVE TOWER* 120.3 (CTAF) 0	GND CON 119.45	CLNC DEL 126.025 (When twr closed)	UNICOM 122.975



	FESIS	IKOXE	JIDKI	CIRMU
	2500	2200	1380	2200
		2.3 NM to RWY 13	1.3 NM to RWY 13	4 NM
	GP 3.00° TCH 40			
	6 NM 2.5 NM 1 NM 1.3 NM			
CATEGORY	A	B	C	D
LPV DA		870- $\frac{3}{4}$ 250 (300- $\frac{3}{4}$)		
LNAV/VNAV DA		1080-1 $\frac{3}{8}$ 460 (500-1 $\frac{3}{8}$)		
LNAV MDA	1080-1	460 (500-1)	1080-1 $\frac{3}{8}$	460 (500-1 $\frac{3}{8}$)
C CIRCLING	1140-1 520 (600-1)	1160-1 540 (600-1)	1280-1 $\frac{3}{4}$ 660 (700-1 $\frac{3}{4}$)	1280-2 660 (700-2)