

WAAS CH 86502 W11A	APP CRS 107°	Rwy Idg TDZE 145 Apt Elev 146	4001
--	------------------------	---	-------------

RNAV (GPS) RWY 11

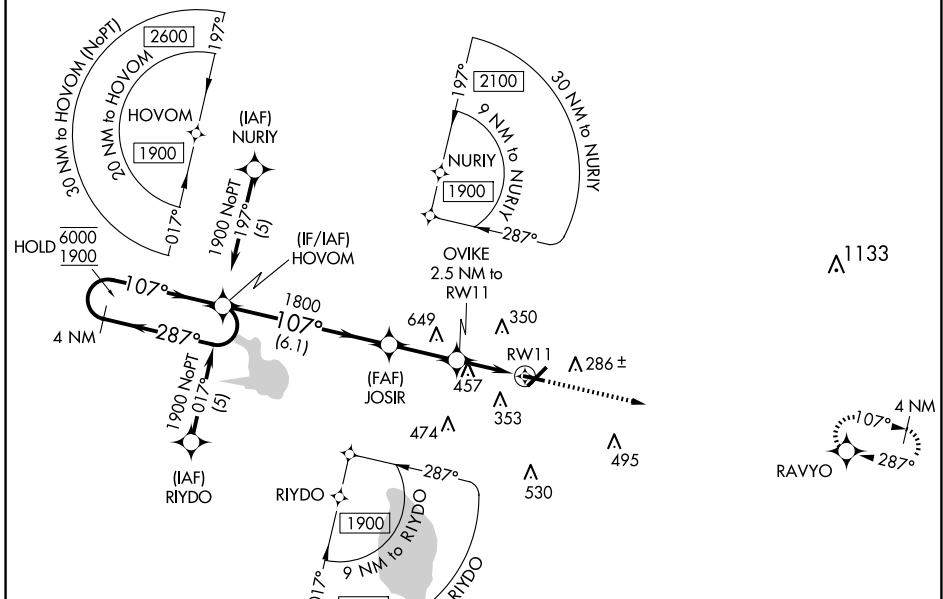
WINTER HAVEN RGNL (GIF')

RNP APCH-GPS.

▼ Rwy 11 helicopter visibility reduction below 1 SM NA. Baro-VNAV NA when using Bartow altimeter setting. For uncompensated Baro-VNAV systems, LNAV/VNAV NA below 3°C or above 54°C. When local altimeter setting not received, use Bartow altimeter setting and increase LPV DA to 415 feet; increase LNAV/VNAV DA to 667 feet and all visibilities ½ SM; increase all MDAs 20 feet. Straight-in Rwy 11 NA at night, Circling Rwy 5, 11, 29 NA at night.

MISSED APPROACH:
Climb to 2600 direct RAVYO and hold.

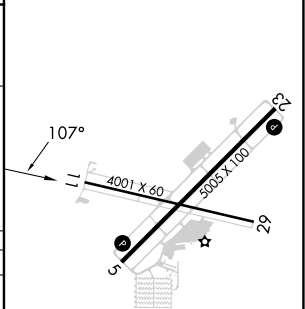
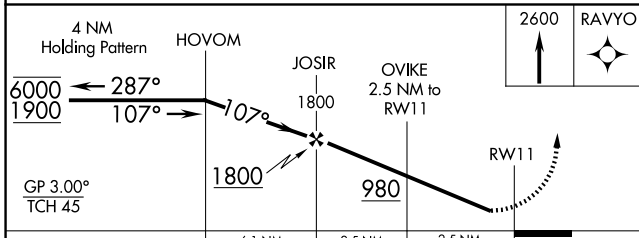
ASOS 133.675	TAMPA APP CON 120.65 290.3	CLNC DEL (GCO) 121.725	UNICOM 123.05 (CTAF) 0
------------------------	--------------------------------------	----------------------------------	----------------------------------



SE-3, 20 MAR 2025 to 17 APR 2025

SE-3, 20 MAR 2025 to 17 APR 2025

ELEV 146	TDZE 145
----------	----------



CATEGORY	A	B	C	D
LPV DA	395-1 250 (300-1)			
LNAV/VNAV DA	647-1 502 (600-1 3/8)			
LNAV MDA	760-1	615 (700-1)	760-1 3/4	615 (700-1 3/4)
CIRCLING	760-1	614 (700-1)	820-2	960-2 3/4
			674 (700-2)	814 (900-2 3/4)

REIL Rwys 5 and 23
REIL Rwys 11 and 29 0
MIRL Rwy 5-23 and 11-29 0