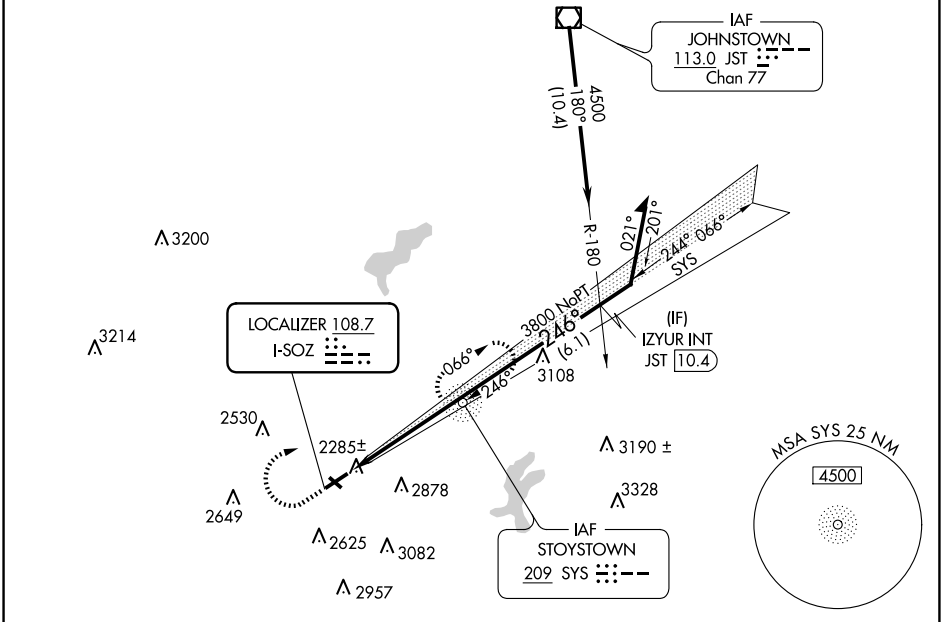


LOC I-SOZ <b>108.7</b>	APP CRS <b>246°</b>	Rwy Idg TDZE Apt Elev	<b>5002</b> <b>2240</b> <b>2275</b>
---------------------------	------------------------	-----------------------------	---

# LOC RWY 25

SOMERSET COUNTY (2G9)

ADF required.		MISSED APPROACH: Climb to 4500 then right turn direct SYS NDB and hold.
<p>▼ Procedure NA at night. Rwy 25 helicopter visibility reduction below 1 SM NA.</p> <p>▲ Circling NA to Rwy 14 and 32.</p>		
AWOS-3P <b>133.8</b>	JOHNSTOWN APP CON ★ <b>121.2 299.2</b>	UNICOM <b>122.8 (CTAF) 0</b>



NE-4, 20 MAR 2025 to 17 APR 2025

NE-4, 20 MAR 2025 to 17 APR 2025

ELEV 2275	TDZE 2240
-----------	-----------

This section provides a detailed view of the approach to Runway 25. It shows the IAF at STOYSTOWN (209 SYS) and the runway itself. Key altitudes include 4500, 3800, 3108, 246, 2285±, 2530, 2649, 2625, 3082, 2957, 3190±, 3328, and 3329. Distances are marked as 10.4, 16.1, 6.1, and 4.9 NM. A Localizer 108.7 (I-SOZ) is shown with a 3.00° TCH 30. A Minimum Safe Altitude (MSA) circle for 25 NM is also depicted.

MIRL Rwy 7-25	REIL Rwys 7 and 25 0
FAF to MAP 4.9 NM	
Knots	60 90 120 150 180
Min:Sec	4:54 3:16 2:27 1:58 1:38