

| | | | |
|--|------------------------|-----------------------------|---|
| WAAS CH 66005 W07A | APP CRS 066° | Rwy Idg TDZE Apt Elev | 5002 2275 2275 |
|--|------------------------|-----------------------------|---|

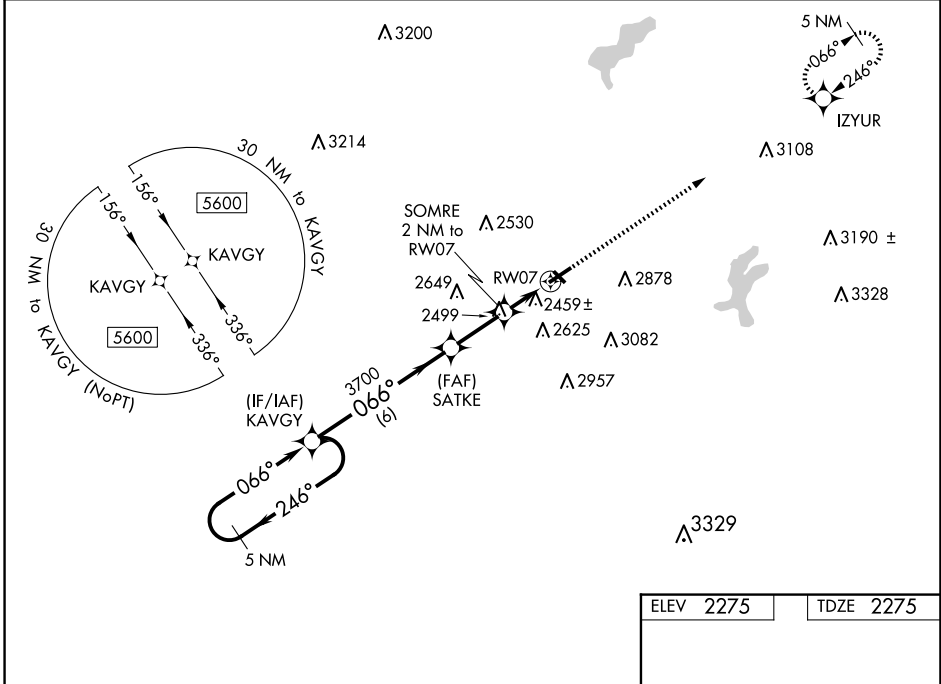
RNAV (GPS) RWY 7

SOMERSET COUNTY (2G9)

⚠ NA Baro-VNAV and VDP NA when using Johnstown altimeter setting. For uncompensated Baro-VNAV systems, LNAV/VNAV NA below -19°C (-2°F) or above 53°C (128°F). DME/DME RNP-0.3 NA. Circling Rwy 25 NA at night. Circling to Rwy 14-32 NA. When local altimeter setting not received, use Johnstown altimeter setting and increase all DA 44 feet and all MDA 60 feet. Increase LPV all Cats visibility 1/8 mile and LNAV/VNAV all Cats visibility 1/4 mile.

MISSED APPROACH:
Climb to 5200 direct IZYUR and hold.

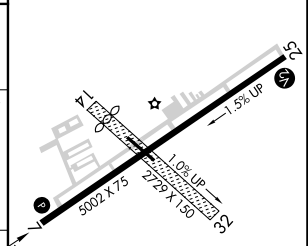
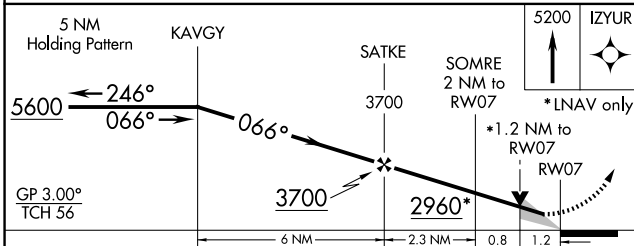
| | | |
|-------------------------|---|---------------------------------|
| AWOS-3P 133.8 | JOHNSTOWN APP CON * 121.2 299.2 | UNICOM 122.8 (CTAF) 0 |
|-------------------------|---|---------------------------------|



NE-4, 20 MAR 2025 to 17 APR 2025

NE-4, 20 MAR 2025 to 17 APR 2025

| | |
|-----------|-----------|
| ELEV 2275 | TDZE 2275 |
|-----------|-----------|



| CATEGORY | A | B | C | D |
|-------------------|-----------------------|-----------------------|-------------------------|-------------------------|
| LPV DA | | 2525-1 | 250 (300-1) | |
| LNAV/VNAV DA | | 2640-1 1/8 | 365 (400-1 1/8) | |
| LNAV MDA | 2720-1 | 445 (500-1) | 2720-1 3/8 | 445 (500-1 1/8) |
| C CIRCLING | 2820-1 545 (600-1) | 2920-1 645 (700-1) | 3460-3 1185 (1200-3) | 3520-3 1245 (1300-3) |

MIREL Rwy 7-25
REIL Rwy 7 and 25 **0**