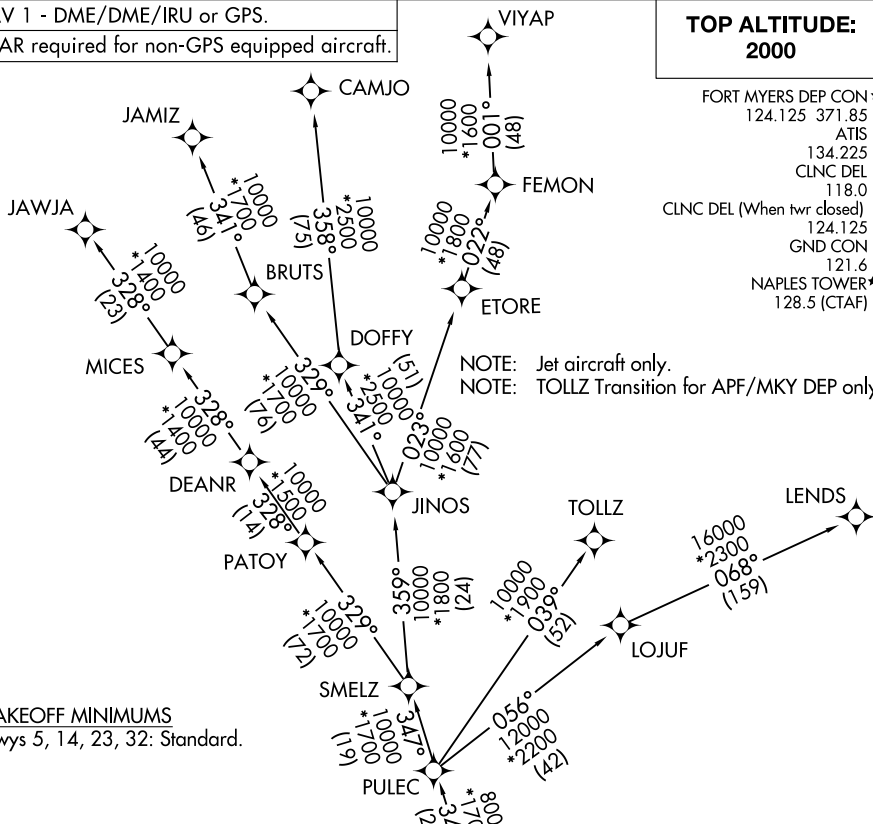


# CSHEL SEVEN DEPARTURE (RNAV)

RNAV 1 - DME/DME/IRU or GPS.  
RADAR required for non-GPS equipped aircraft.

**TOP ALTITUDE:  
2000**

FORT MYERS DEP CON\*  
 124.125 371.85  
 ATIS  
 134.225  
 CLNC DEL  
 118.0  
 CLNC DEL (When twr closed)  
 124.125  
 GND CON  
 121.6  
 NAPLES TOWER\*  
 128.5 (CTAF)



**TAKEOFF MINIMUMS**  
Rwys 5, 14, 23, 32: Standard.

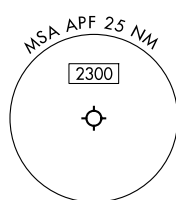
## DEPARTURE ROUTE DESCRIPTION

**TAKEOFF RUNWAYS 5, 23, 32:** Climb on assigned heading for RADAR vectors to CSHEL, thence...

**TAKEOFF RUNWAY 14:** Climb on heading 137° to 600, for RADAR vectors to CSHEL, thence...

... on assigned transition. Maintain 2000. Expect clearance to filed altitude within 10 minutes after departure.

- CAMJO TRANSITION (CSHEL7.CAMJO)
- JAMIZ TRANSITION (CSHEL7.JAMIZ)
- JAWJA TRANSITION (CSHEL7.JAWJA)
- LENDZ TRANSITION (CSHEL7.LENDZ)
- TOLLZ TRANSITION (CSHEL7.TOLLZ)
- VIYAP TRANSITION (CSHEL7.VIYAP)



NOTE: Chart not to scale.

# CSHEL SEVEN DEPARTURE (RNAV)

(CSHEL7.CSHEL) 31OCT24