

WAAS CH <b>58109</b> <b>W02A</b>	APP CRS <b>021°</b>	Rwy Idg TDZE Apt Elev	<b>7026</b> <b>913</b> <b>913</b>
--	------------------------	-----------------------------	---

# RNAV (GPS) RWY 2

DE KALB TAYLOR MUNI (DKB)

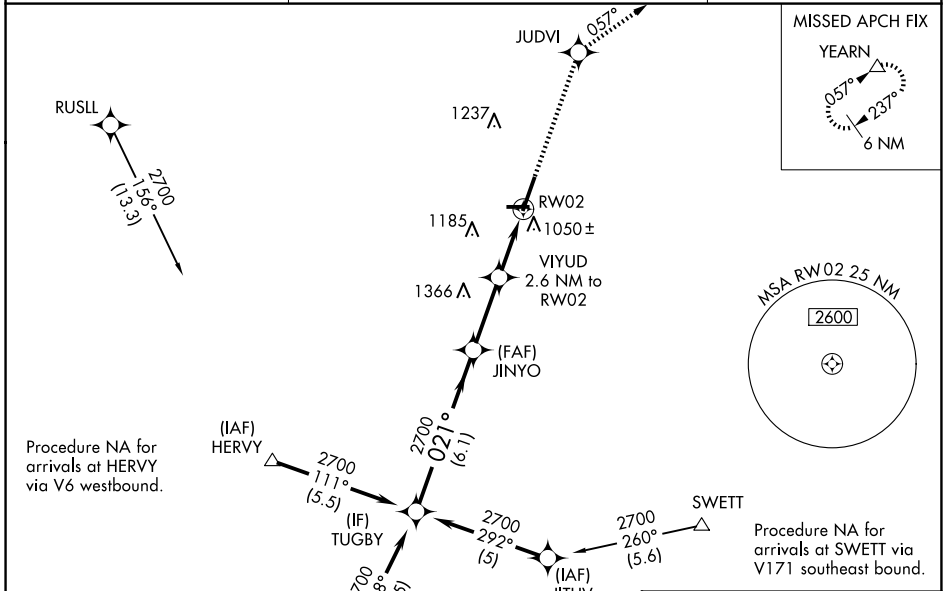
**▼** Baro-VNAV NA when using Aurora altimeter setting. For uncompensated Baro-VNAV systems, LNAV/VNAV NA below -16°C (4°F) or above 47°C (116°F). DME/DME RNP-0.3 NA. VDP NA when using Aurora altimeter setting. When local altimeter setting not received, use Aurora altimeter setting and increase all DA 61 feet and all MDA 80 feet; increase all LPV and LNAV/VNAV visibilities, LNAV Cats C/D visibility, and Circling Cats C/D visibility ¼ mile. For inop MALSR, increase LPV all Cats visibility to 1.

MALSR



**MISSED APPROACH:**  
Climb to 3000 direct JUDVI and via 057° track to YEARN and hold.

AWOS-3 <b>119.075</b>	CHICAGO APP CON <b>133.5 349.0</b>	UNICOM <b>122.7 (CTAF) 0</b>
--------------------------	---------------------------------------	---------------------------------



EC-3, 20 MAR 2025 to 17 APR 2025

EC-3, 20 MAR 2025 to 17 APR 2025

ELEV 913	TDZE 913
REIL Rwy 9, 20 and 27	
MIRL Rwy 2-20	
MIRL Rwy 9-27	

Procedure Turn NA	VGSI and RNAV glidepath not coincident (VGSI Angle 3.00/TCH 53).	3000	JUDVI	tr	YEARN
TUGBY	JINYO			057°	△
GP 3.00° TCH 55	VIYUD 2.6 NM to RW02				
	*1.2 NM to RW02				
	*1800				
					*LNAV only.
	6.1 NM	2.8 NM	1.4 NM	1.2 NM	
CATEGORY	A	B	C	D	
LPV DA		1207-½	294 (300-½)		
LNAV/VNAV DA		1360-1	447 (500-1)		
LNAV MDA	1360-½	447 (500-½)	1360-¾ 447 (500-¾)	1360-1 447 (500-1)	
CIRCLING	1360-1 447 (500-1)	1500-1 587 (600-1)	1600-2 687 (700-2)	1740-2¾ 827 (900-2¾)	

