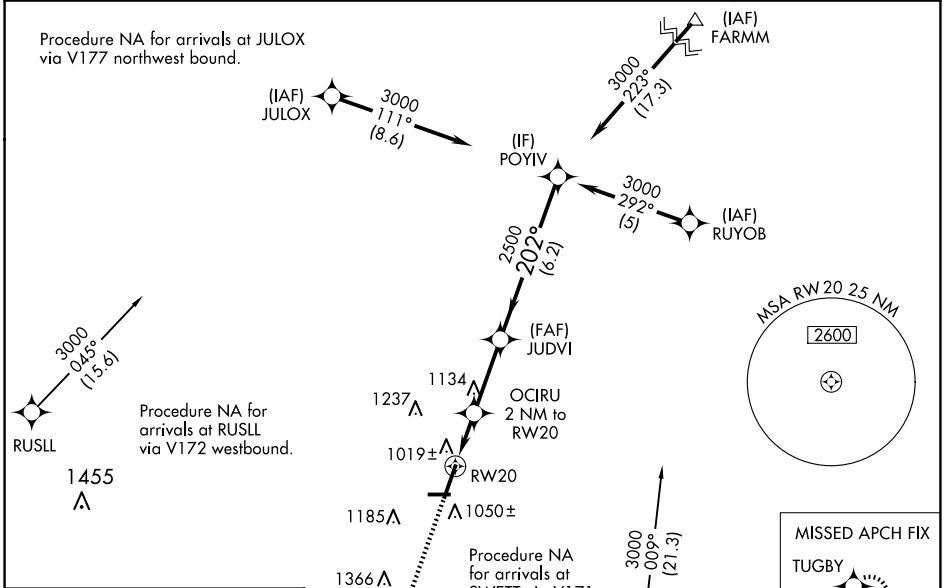


WAAS CH <b>50409</b> <b>W20A</b>	APP CRS <b>202°</b>	Rwy Idg TDZE Apt Elev	<b>7026</b> <b>905</b> <b>913</b>
--	------------------------	-----------------------------	---

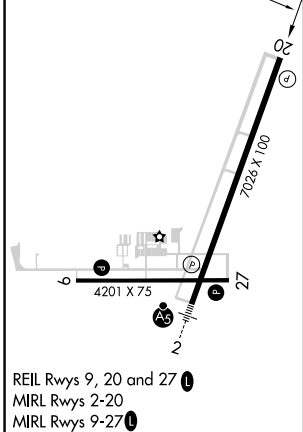
# RNAV (GPS) RWY 20

DE KALB TAYLOR MUNI (DKB)

<p><b>⚠</b> Baro-VNAV NA when using Aurora altimeter setting. For uncompensated Baro-VNAV systems, LNAV/VNAV NA below -16°C (4°F) or above 47°C (116°F).  <b>⚠</b> DME/DME RNP-0.3 NA. Visibility reduction by helicopters NA. VDP NA when using Aurora altimeter setting. When local altimeter setting not present, use Aurora altimeter setting and increase all DA 61 feet and all MDA 80 feet; increase all LPV and LNAV/VNAV visibilities, LNAV Cat D visibility, and Circling Cats C/D visibility ¼ mile.</p>		<p>MISSED APPROACH: Climb to 2700 direct TUGBY and hold.</p>
<p>AWOS-3 <b>119.075</b></p>	<p>CHICAGO APP CON <b>133.5 349.0</b></p>	<p>UNICOM <b>122.7 (CTAF) 0</b></p>



ELEV 913	TDZE 905
----------	----------



<p>VGSI and RNAV glidepath not coincident (VGSI Angle 3.00/TCH 29).</p>	POYIV																									
<p>1.2 NM</p> <p>0.8 NM</p> <p>2.8 NM</p> <p>6.2 NM</p>	<p>3000</p>																									
<table border="1"> <thead> <tr> <th>CATEGORY</th> <th>A</th> <th>B</th> <th>C</th> <th>D</th> </tr> </thead> <tbody> <tr> <td>LPV DA</td> <td></td> <td>1155-¾</td> <td>250 (300-¾)</td> <td></td> </tr> <tr> <td>LNAV/VNAV DA</td> <td></td> <td>1430-1¾</td> <td>525 (600-1¾)</td> <td></td> </tr> <tr> <td>LNAV MDA</td> <td>1320-1</td> <td>415 (500-1)</td> <td>1320-1¼</td> <td>415 (500-1¼)</td> </tr> <tr> <td>CIRCLING</td> <td>1360-1 447 (500-1)</td> <td>1500-1 587 (600-1)</td> <td>1600-2 687 (700-2)</td> <td>1740-2¾ 827 (900-2¾)</td> </tr> </tbody> </table>	CATEGORY	A	B	C	D	LPV DA		1155-¾	250 (300-¾)		LNAV/VNAV DA		1430-1¾	525 (600-1¾)		LNAV MDA	1320-1	415 (500-1)	1320-1¼	415 (500-1¼)	CIRCLING	1360-1 447 (500-1)	1500-1 587 (600-1)	1600-2 687 (700-2)	1740-2¾ 827 (900-2¾)	
CATEGORY	A	B	C	D																						
LPV DA		1155-¾	250 (300-¾)																							
LNAV/VNAV DA		1430-1¾	525 (600-1¾)																							
LNAV MDA	1320-1	415 (500-1)	1320-1¼	415 (500-1¼)																						
CIRCLING	1360-1 447 (500-1)	1500-1 587 (600-1)	1600-2 687 (700-2)	1740-2¾ 827 (900-2¾)																						