

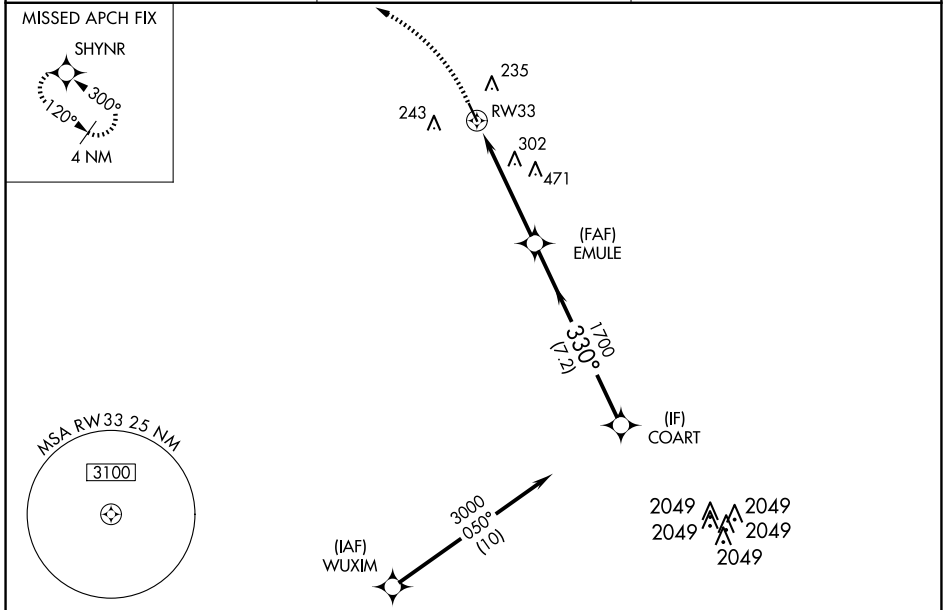
APP CRS	Rwy Idg	3953
330°	TDZE	111
	Apt Elev	111

RNAV (GPS) RWY 33

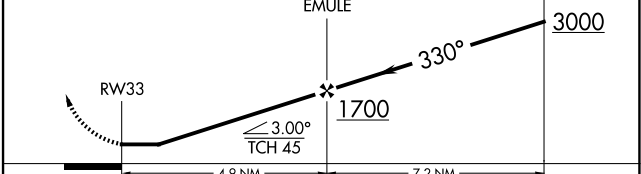
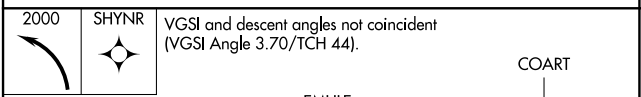
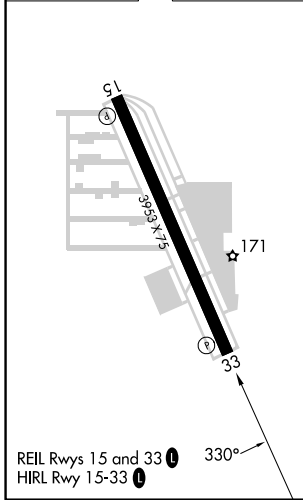
WEST HOUSTON (IWS)

RNP APCH.	Rwy 33 helicopter visibility reduction below 1 SM NA. Use George Bush Intcnl/Houston altimeter setting. Circling Rwy 15 NA at night.	MISSED APPROACH: Climbing left turn to 2000 direct SHYNR and hold.
Rwy 33 helicopter visibility reduction below 1 SM NA. Use George Bush Intcnl/Houston altimeter setting. Circling Rwy 15 NA at night.		

HOUSTON APP CON 123.8 257.7	CLNC DEL 121.15	UNICOM 123.05 (CTAF) 0
---------------------------------------	---------------------------	----------------------------------



ELEV 111	TDZE 111
----------	----------



CATEGORY	A	B	C	D
LNAV MDA	600-1	489 (500-1)	600-1 $\frac{3}{8}$ 489 (500-1 $\frac{3}{8}$)	NA
CIRCLING	600-1 489 (500-1)	640-1 529 (600-1)	800-2 689 (700-2)	NA

SC-5, 20 MAR 2025 to 17 APR 2025

SC-5, 20 MAR 2025 to 17 APR 2025