

PUNTA GORDA, FLORIDA

AL-6178 (FAA)

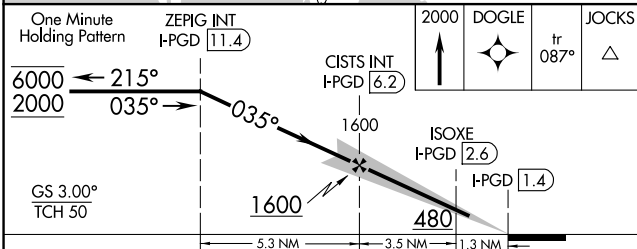
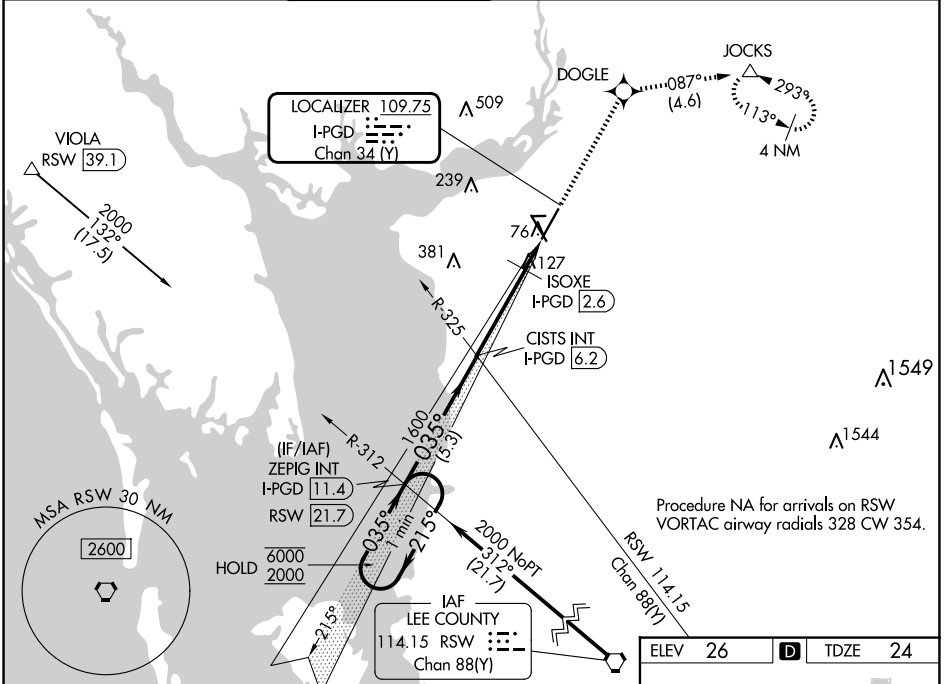
25051

LOC/DME I-PGD <b>109.75</b> Chan <b>34 (Y)</b>	APP CRS <b>035°</b>	Rwy Idg TDZE Apt Elev	<b>7193</b> <b>24</b> <b>26</b>
--	------------------------	-----------------------------	---------------------------------------

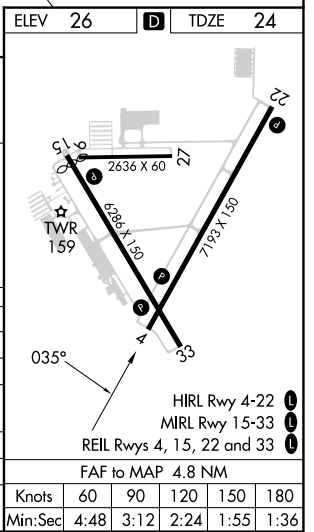
# ILS or LOC RWY 4

PUNTA GORDA (PGD)

RNP APCH - GPS.		MISSED APPROACH: Climb to 2000 direct DOGLE and on track 087° to JOCKS and hold.				
ATIS <b>135.675</b>	FORT MYERS APP CON ★ <b>127.05 306.2</b>	PUNTA GORDA TOWER ★ <b>121.0 (CTAF) 0</b>	GND CON <b>119.55</b>	CLNC DEL <b>119.55</b>	CLNC DEL <b>127.05</b> (When twr closed)	UNICOM <b>122.975</b>



CATEGORY	A	B	C	D
S-ILS 4		256-¾	232 (300-¾)	
S-LOC 4	480-1	456 (500-1)	480-1¾	456 (500-1¾)
CIRCLING	480-1	580-1	600-1½	740-2¼
	454 (500-1)	554 (600-1)	574 (600-1½)	714 (800-2¼)
ISOXE FIX MINIMUMS (DME REQUIRED)				
S-LOC 4	380-1	356 (400-1)		
CIRCLING	460-1	580-1	600-1½	740-2¼
	434 (500-1)	554 (600-1)	574 (600-1½)	714 (800-2¼)



SE-3, 20 MAR 2025 to 17 APR 2025

SE-3, 20 MAR 2025 to 17 APR 2025

PUNTA GORDA, FLORIDA  
Amdt 1 05SEP24

26°55'N-81°59'W

# PUNTA GORDA (PGD)

## ILS or LOC RWY 4