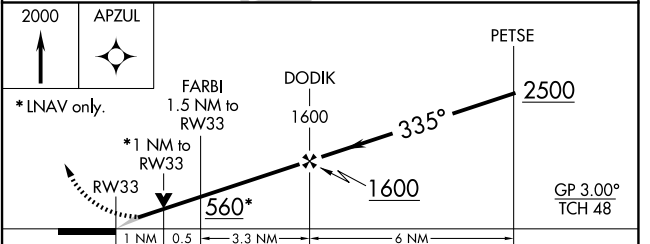
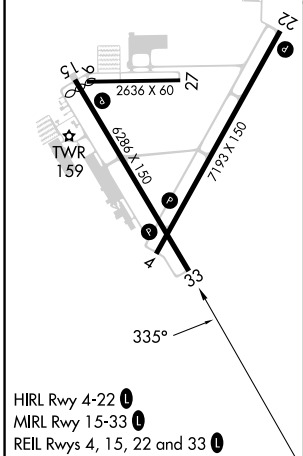
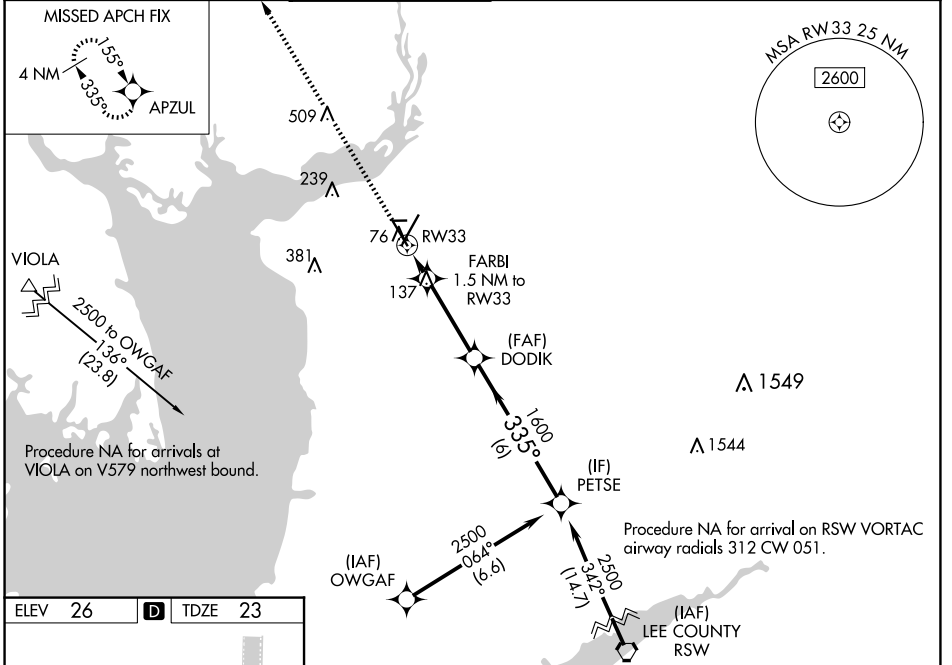


WAAS CH <b>93507</b> <b>W33A</b>	APP CRS <b>335°</b>	Rwy Idg TDZE Apt Elev	<b>6015</b> <b>23</b> <b>26</b>
--	------------------------	-----------------------------	---------------------------------------

# RNAV (GPS) RWY 33

PUNTA GORDA (PGD)

RNP APCH.				MISSED APPROACH: Climb to 2000 direct APZUL and hold.		
<p>▼ For uncompensated Baro-VNAV systems, LNAV/VNAV NA below 2°C or above 54°C.</p>						
ATIS <b>135.675</b>	FORT MYERS APP CON ★ <b>127.05 306.2</b>	PUNTA GORDA TOWER ★ <b>121.0 (CTAF) 0</b>	GND CON <b>119.55</b>	CLNC DEL <b>119.55</b>	CLNC DEL <b>127.05</b> (When twr closed)	UNICOM <b>122.975</b>



CATEGORY	A	B	C	D
LPV DA		273-3/4	250 (300-3/4)	
LNAV/VNAV DA		288-7/8	265 (300-7/8)	
LNAV MDA		400-1	377 (400-1)	
<b>C</b> CIRCLING	460-1 434 (500-1)	580-1 554 (600-1)	600-1 1/2 574 (600-1 1/2)	740-2 1/4 714 (800-2 1/4)

SE-3, 20 MAR 2025 to 17 APR 2025

SE-3, 20 MAR 2025 to 17 APR 2025