

APP CRS	Rwy Idg	4033
247°	TDZE	764
	Apt Elev	775

RNAV (GPS) RWY 25

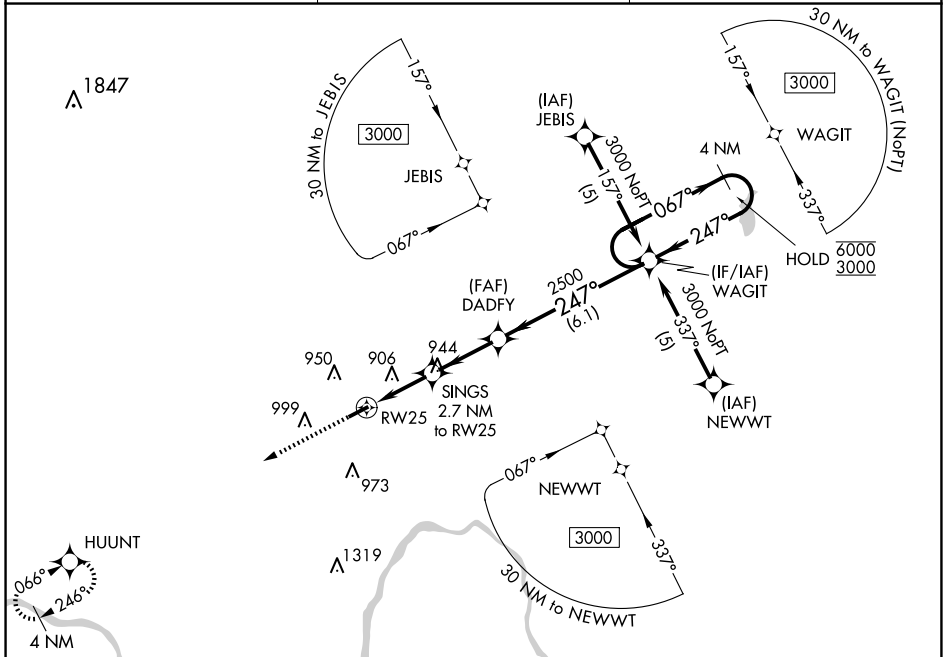
PAUL C MILLER/SPARTA (8D4)

RNP APCH.

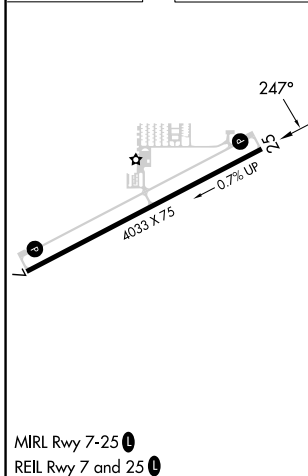
▼ Rwy 25 helicopter visibility reduction below 3/4 SM NA. When local altimeter setting not received, use Grand Rapids altimeter setting. VDP NA when using Grand Rapids
▲ NA

MISSED APPROACH:
 Climb to 3000 direct HUUNT and hold.

AWOS-3PT 126.65	GREAT LAKES APP CON * 124.6 257.6	UNICOM 122.8 (CTAF) 0
---------------------------	---	---------------------------------



ELEV 775	TDZE 764
----------	----------



	3000	HUUNT	Visual Segment - Obstacles.	4 NM	4 NM Holding Pattern
	1.2 NM	1.5 NM	2.6 NM	6.1 NM	
CATEGORY	A	B	C	D	
LNAV MDA	1240-1	476 (500-1)		NA	
CIRCLING	1300-1	1340-1		NA	
	525 (600-1)	565 (600-1)			

EC-1, 20 MAR 2025 to 17 APR 2025

EC-1, 20 MAR 2025 to 17 APR 2025