

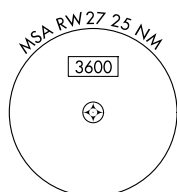
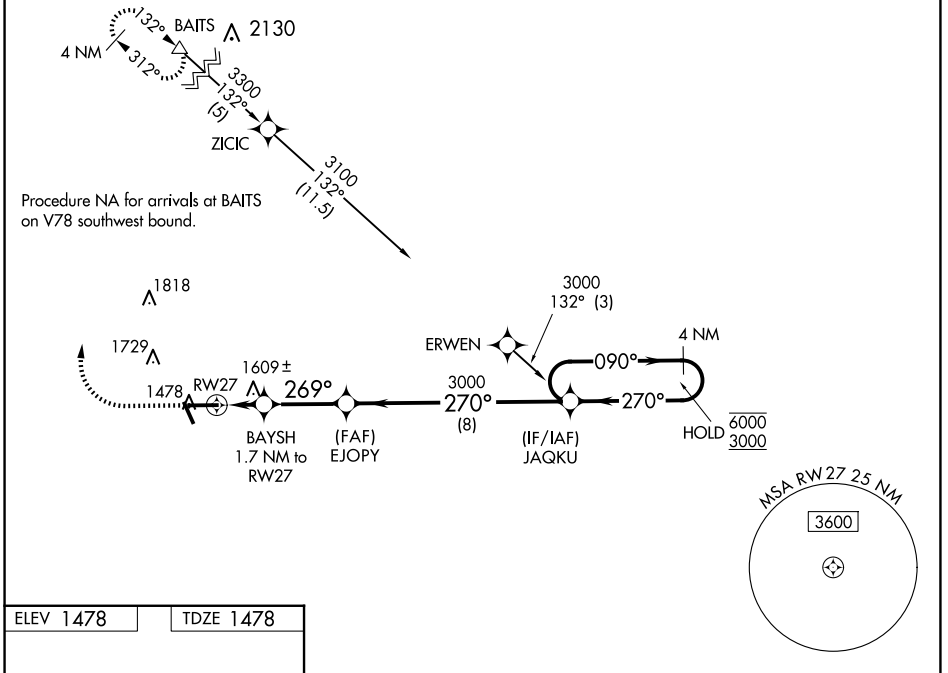
WAAS CH 66011 W27A	APP CRS 269°	Rwy Idg TDZE 1478 Apt Elev 1478	6000
--	------------------------	---	-------------

RNAV (GPS) RWY 27

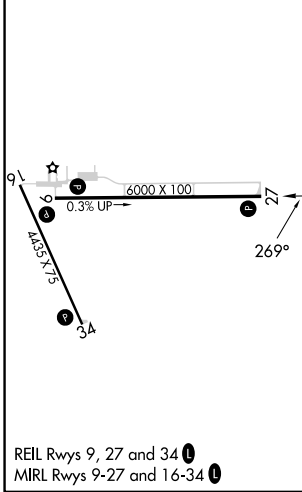
TAYLOR COUNTY (MDZ)

RNP APCH-GPS.	<p>MISSED APPROACH: Climb to 2000 then climbing right turn to 3300 direct BAITS and hold.</p>
<p>▽ For uncompensated Baro-VNAV systems, LNAV/VNAV NA below -17°C or above 54°C.</p> <p>▲</p>	

AWOS-3 119.025	MINNEAPOLIS CENTER 124.4 317.7	UNICOM 122.8 (CTAF) 0
--------------------------	--	---------------------------------



ELEV 1478	TDZE 1478
-----------	-----------



	2000	3300	BAITS △	EJOPLY 3000	JAQKU	4 NM Holding Pattern	
				270°	090° → 6000 ← 270° 3000		
			BAYSH 1.7 NM to RW27	269°	3000	GP 3.00° TCH 46	
			RW27	1.1 NM to RW27	2060		
			1.1 NM	0.7 NM	2.9 NM	8 NM	
CATEGORY	A		B		C		D
LPV DA			1678-¾		200 (200-¾)		
LNAV/VNAV DA			1877-1½		399 (400-1½)		
LNAV MDA	1860-1		382 (400-1)		1860-1½ 382 (400-1½)		
C CIRCLING	1900-1 422 (500-1)		2040-1 562 (600-1)		2040-1½ 562 (600-1½)		2180-2¼ 702 (800-2¼)

EC-3, 20 MAR 2025 to 17 APR 2025

EC-3, 20 MAR 2025 to 17 APR 2025