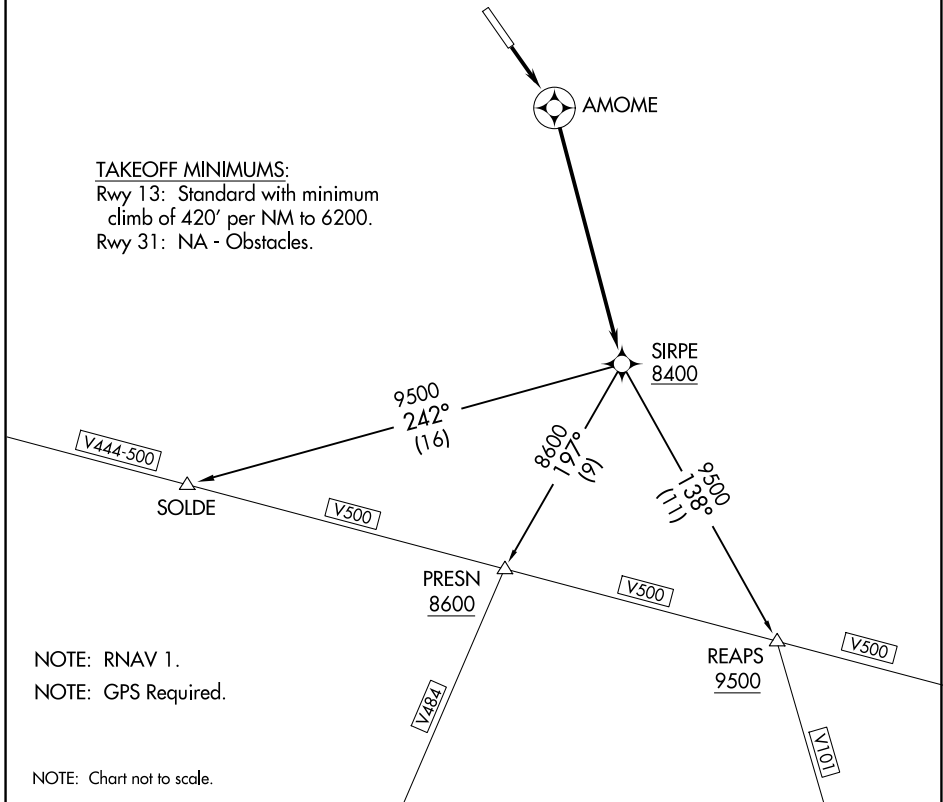


TOP ALTITUDE:
PRESN AND REAPS TRANSITIONS: 10000;
SOLDE TRANSITION: ASSIGNED BY ATC

GND CON 121.7
HAILEY TOWER * 125.6
SALT LAKE CENTER 118.05 363.0
UNICOM 122.95

TAKEOFF MINIMUMS:
Rwy 13: Standard with minimum climb of 420' per NM to 6200.
Rwy 31: NA - Obstacles.



NW-1, 20 MAR 2025 to 17 APR 2025

NW-1, 20 MAR 2025 to 17 APR 2025

NOTE: RNAV 1.
NOTE: GPS Required.

NOTE: Chart not to scale.

DEPARTURE ROUTE DESCRIPTION

TAKEOFF RUNWAY 13: Climb direct AMOME, then climbing right turn direct SIRPE; cross SIRPE at or above 8400, thence. . . .
. . . .on (Transition).

- PRESN TRANSITION (AUREL3.PRESN)
- REAPS TRANSITION (AUREL3.REAPS)
- SOLDE TRANSITION (AUREL3.SOLDE)