

| | | |
|--|------------------------|---|
| LOC/DME I-EXX 108.75 Chan 24(Y) | APP CRS 058° | Rwy Idg 5004 TDZE 733 Apt Elev 733 |
|--|------------------------|---|

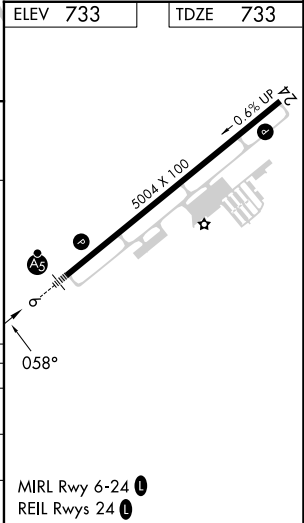
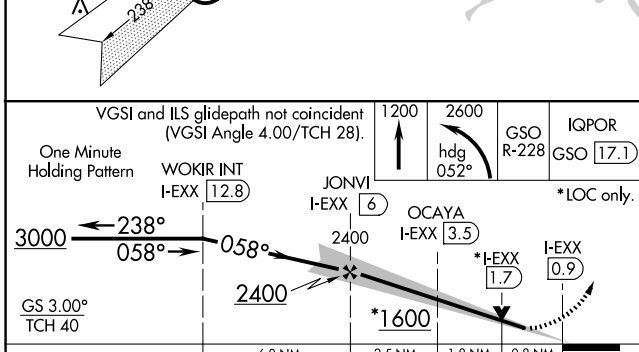
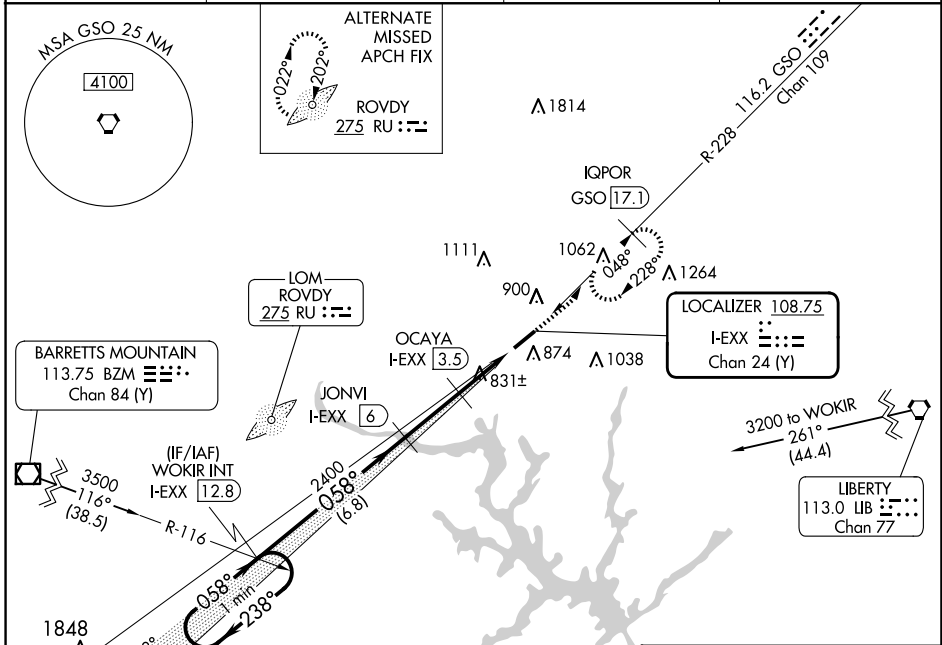
ILS or LOC RWY 6

DAVIDSON COUNTY EXEC (E.XX)

VDP NA with Salisbury altimeter setting. When local altimeter setting not received, use Salisbury altimeter setting and increase all DA 37 feet and all MDA 40 feet; increase S-ILS 6 all Cats and S-LOC 6 Cat C visibility 1/8 mile. DME required. Rwy 6 helicopter visibility reduction below 3/4 SM NA.

MALSR MISSED APPROACH: Climb to 1200 then climbing left turn to 2600 on heading 052° and GSO VORTAC R-228 to IQPOR/GSO 17.1 DME and hold.

| | | | |
|--------------------------|--|-----------------------|--|
| AWOS-3 119.825 | GREENSBORO APP CON 126.6 327.075 | GCO 135.075 | UNICOM 122.8 (CTAF) 0 |
|--------------------------|--|-----------------------|--|



| CATEGORY | A | B | C | D |
|----------|-----------------------|--------------------|----------------------------|----|
| S-ILS 6 | 983-7/8 250 (300-7/8) | | | NA |
| S-LOC 6 | 1120-1 | 387 (400-1) | 1120-1 1/8 387 (400-1 1/8) | NA |
| CIRCLING | 1220-1 487 (500-1) | 1240-1 507 (600-1) | 1340-1 3/4 607 (700-1 3/4) | NA |

SE-2, 20 MAR 2025 to 17 APR 2025

SE-2, 20 MAR 2025 to 17 APR 2025