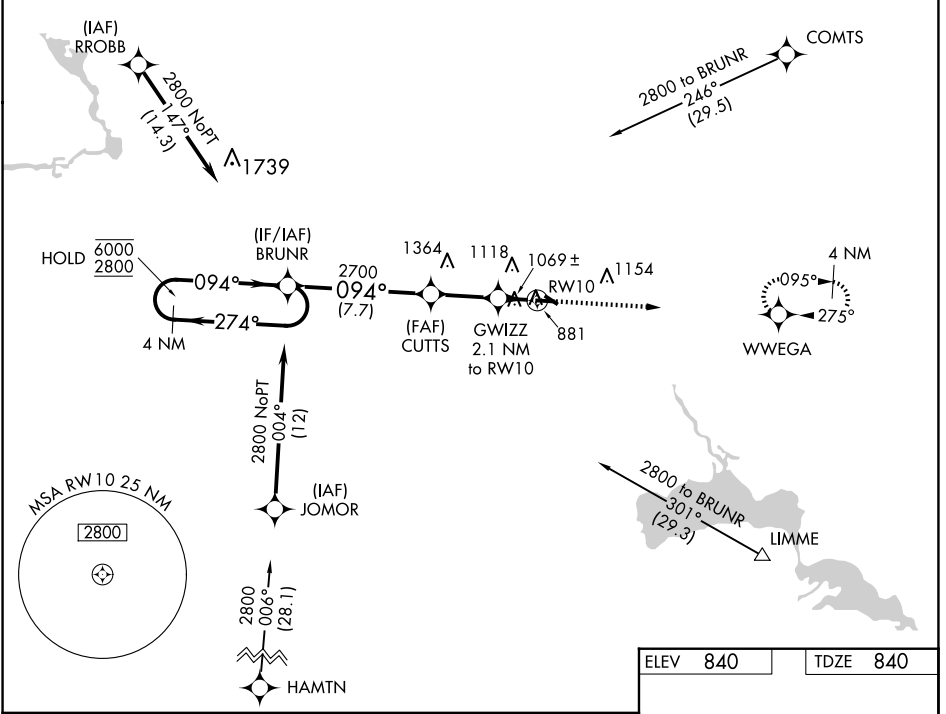


WAAS CH <b>63120</b> <b>W10A</b>	APP CRS <b>094°</b>	Rwy Idg TDZE Apt Elev	<b>5200</b> <b>840</b> <b>840</b>
--	------------------------	-----------------------------	---

# RNAV (GPS) RWY 10

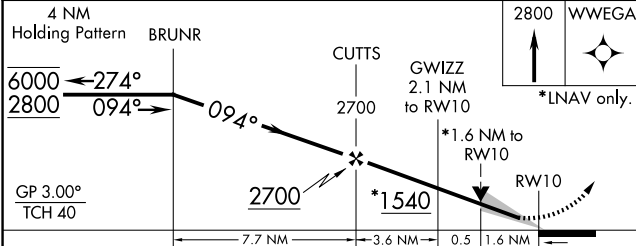
WAUPACA MUNI (PCZ)

RNP APCH. ▼ For uncompensated Baro-VNAV systems, LNAV/VNAV ▲ NA below -16°C or above 54°C.		MISSED APPROACH: Climb to 2800 direct WVEGA and hold.
AWOS-3 <b>118.625</b>	MINNEAPOLIS CENTER <b>124.4 317.7</b>	UNICOM <b>122.8 (CTAF) 0</b>



EC-3, 20 MAR 2025 to 17 APR 2025

EC-3, 20 MAR 2025 to 17 APR 2025



ELEV 840	TDZE 840
2800 WVEGA	*LNAV only.
094°	13 3899 X 75 5200 X 100 0.6% UP 0.7% UP
094°	31 82
CIRCLING	REIL Rwy 10 and 28 MIRL Rwy 10-28 and 13-31

CATEGORY	A	B	C	D
LPV DA		1090-3/4	250 (300-3/4)	
LNAV/VNAV DA		1384-15/8	544 (600-15/8)	
LNAV MDA	1380-1	540 (600-1)	1380-1 1/2	540 (600-1 1/2)
CIRCLING	1380-1 540 (600-1)	1420-1 580 (600-1)	1420-1 1/2 580 (600-1 1/2)	1500-2 660 (700-2)