

KARRR SEVEN DEPARTURE (RNAV)
(KARRR7 .KARRR) 29DEC22

ASOS
118.525
CTAF
122.725
CLNC DEL
124.0
HOUSTON DEP CON
134.45 284.0

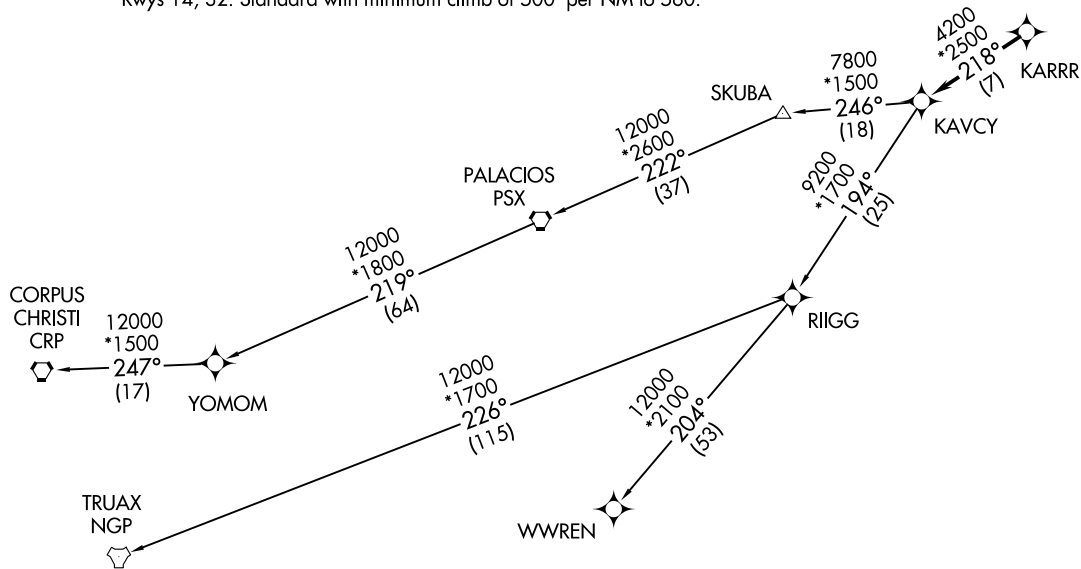
RNAV-1 DME/DME/IRU or GPS.

RADAR required.

TOP ALTITUDE:
ASSIGNED BY ATC

TAKEOFF MINIMUMS

Rwys 14, 32: Standard with minimum climb of 500' per NM to 560.



(NARRATIVE ON FOLLOWING PAGE)

NOTE: Chart not to scale.

(KARRR7 .KARRR) 22363
KARRR SEVEN DEPARTURE (RNAV)

AL-6460 (FAA)

PEARLAND RGNL (L V T)
HOUSTON, TEXAS

HOUSTON, TEXAS
PEARLAND RGNL (L V T)

KARRR SEVEN DEPARTURE (RNAV)



DEPARTURE ROUTE DESCRIPTION

TAKEOFF RUNWAY 14: Climb on heading 142° to 1 600, for RADAR vectors to KARRR, thence. . . .

TAKEOFF RUNWAY 32: Climb on heading 322° to 900, for RADAR vectors to KARRR, thence. . . .

. . . .on track 218° to KAVCY, then on (transition). Maintain ATC assigned altitude. Expect filed altitude 10 minutes after departure.

CORPUS CHRISTI TRANSITION (KARRR7.CRP)

PALACIOS TRANSITION (KARRR7.PSX)

TRUAX TRANSITION (KARRR7.NGP)

WWREN TRANSITION (KARRR7.WWREN)

YOMOM TRANSITION (KARRR7.YOMOM)

SC-5, 20 MAR 2025 to 17 APR 2025

SC-5, 20 MAR 2025 to 17 APR 2025