

(LURIC8.LURIC) 21280

AL-6460 (FAA)

PEARLAND RGNL (L.V.J)

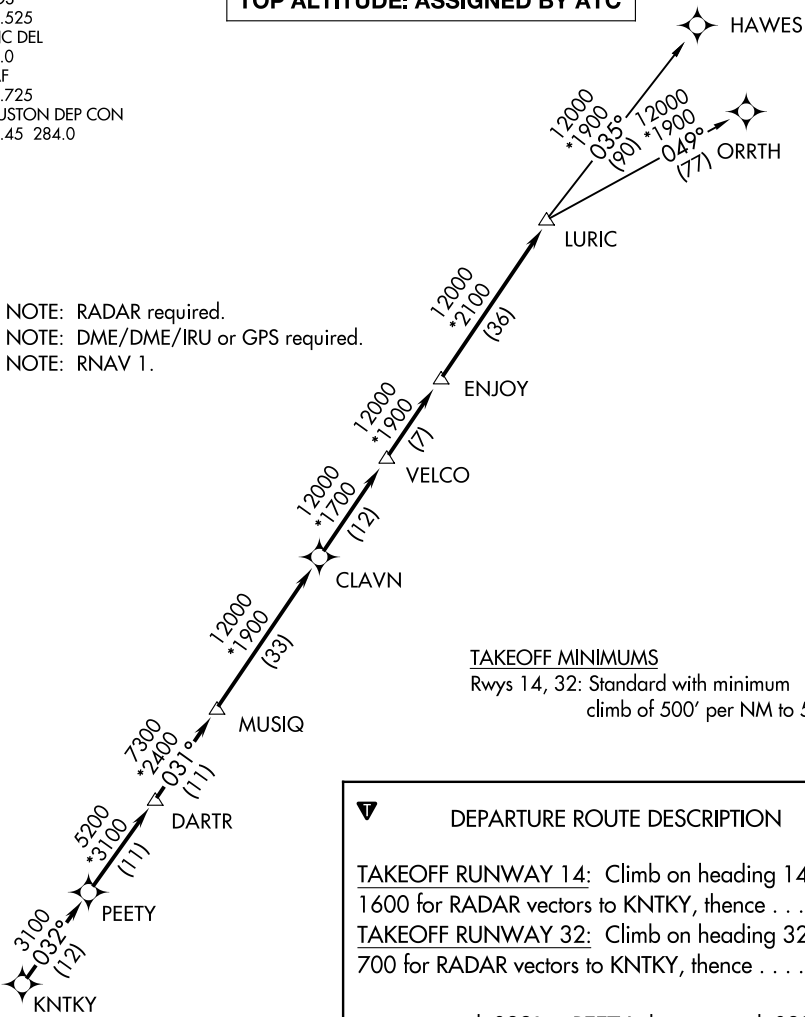
# LURIC EIGHT DEPARTURE (RNAV)

HOUSTON, TEXAS

ASOS  
118.525  
CLNC DEL  
124.0  
CTAF  
122.725  
HOUSTON DEP CON  
134.45 284.0

**TOP ALTITUDE: ASSIGNED BY ATC**

NOTE: RADAR required.  
NOTE: DME/DME/IRU or GPS required.  
NOTE: RNAV 1.



### TAKEOFF MINIMUMS

Rwys 14, 32: Standard with minimum climb of 500' per NM to 560.

### DEPARTURE ROUTE DESCRIPTION

**TAKEOFF RUNWAY 14:** Climb on heading 142° to 1600 for RADAR vectors to KNTKY, thence . . . .

**TAKEOFF RUNWAY 32:** Climb on heading 322° to 700 for RADAR vectors to KNTKY, thence . . . .

. . . . on track 032° to PEETY, then on track 032° to DARTR, then on track 031° to MUSIQ, then on track 031° to CLAVN, then on track 031° to VELCO, then on track 031° to ENJOY, then on track 031° to LURIC, then on (transition). Maintain ATC assigned altitude. Expect filed altitude 10 minutes after departure.

HAWES TRANSITION (LURIC8.HAWES)

ORRTH TRANSITION (LURIC8.ORRTH)

NOTE: Chart not to scale.

**LURIC EIGHT DEPARTURE (RNAV)**  
(LURIC8.LURIC) 07OCT21

HOUSTON, TEXAS  
PEARLAND RGNL (L.V.J)

SC-5, 20 MAR 2025 to 17 APR 2025

SC-5, 20 MAR 2025 to 17 APR 2025