

# MMALT SEVEN DEPARTURE (RNAV)

SC-5, 20 MAR 2025 to 17 APR 2025

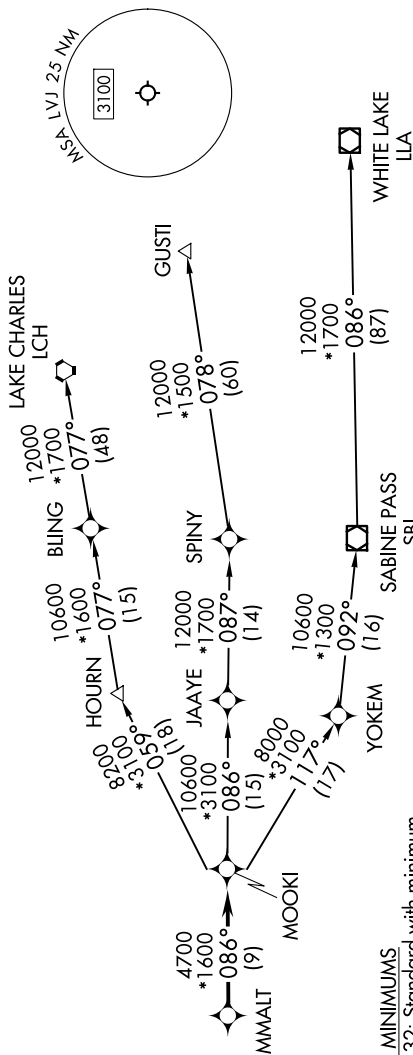
RNAV 1 - DME/DME/IRU or GPS.

RADAR required.

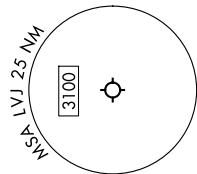
HOUSTON DEP CON  
134.45 284.0  
ASOS  
118.525  
CLNC DEL  
124.0  
CTAF  
122.725

# MMALT SEVEN DEPARTURE (RNAV)

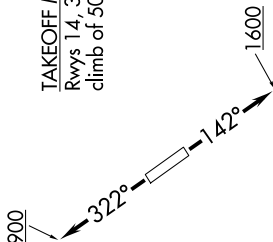
30NOV23



TOP ALTITUDE:  
ASSIGNED BY ATC



TAKEOFF MINIMUMS  
Rwys 14, 32: Standard with minimum  
climb of 500' /NM to 560.



NOTE: GUSTI and LCH Transitions ATC assigned only for aircraft departing AXH, EFD, GLS, HPY, IWS, LBX, LVJ, SGR, TME, T00, T41 and 54T.

## DEPARTURE ROUTE DESCRIPTION

**TAKEOFF RUNWAY 14:** Climb on heading 142° to 1600, for RADAR vectors to MMALT, thence. . . .  
**TAKEOFF RUNWAY 32:** Climb on heading 322° to 900, for RADAR vectors to MMALT, thence. . . .

. . . on track 086° to MOOKI, then on (transition). Maintain ATC assigned altitude.  
Expect filed altitude 10 minutes after departure.

- GUSTI TRANSITION (MMALT7.GUSTI)
- LAKE CHARLES TRANSITION (MMALT7.LCH)
- WHITE LAKE TRANSITION (MMALT7.LLA)

NOTE: Chart not to scale.

SC-5, 20 MAR 2025 to 17 APR 2025