

WYLSN EIGHT DEPARTURE (RNAV)

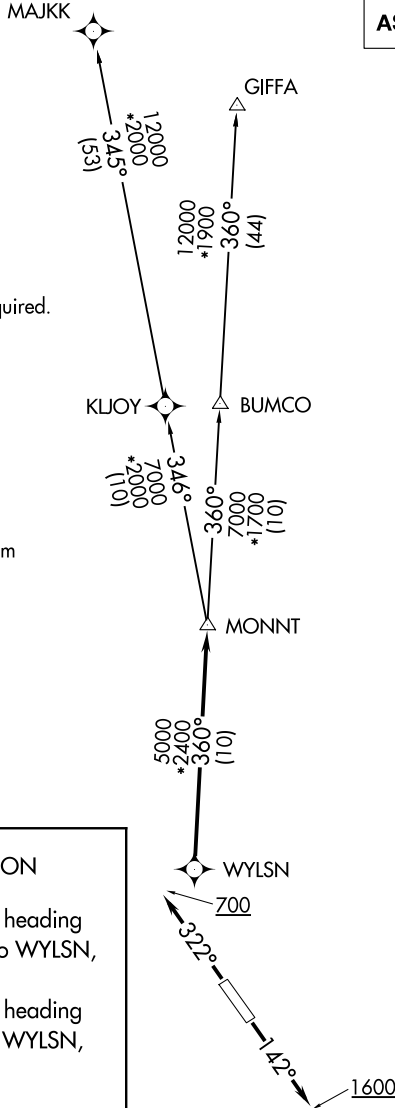
ASOS
 118.525
 CLNC DEL
 124.0
 CTAF
 122.725
 HOUSTON DEP CON
 134.45 284.0

NOTE: RADAR required.
 NOTE: DME/DME/IRU or GPS required.
 NOTE: RNAV 1.

TAKEOFF MINIMUMS

Rwy 14, 32: Standard with minimum climb of 500' per NM to 560.

**TOP ALTITUDE:
 ASSIGNED BY ATC**



SC-5, 20 MAR 2025 to 17 APR 2025

SC-5, 20 MAR 2025 to 17 APR 2025

DEPARTURE ROUTE DESCRIPTION

TAKEOFF RUNWAY 14: Climb on heading 142° to 1600 for RADAR vectors to WYLSN, thence. . . .

TAKEOFF RUNWAY 32: Climb on heading 322° to 700 for RADAR vectors to WYLSN, thence. . . .

. . . .on track 360° to MONNT, then on (transition). Maintain ATC assigned altitude. Expect filed altitude 10 minutes after departure.

GIFFA TRANSITION (WYLSN8.GIFFA)
MAJJK TRANSITION (WYLSN8.MAJJK)

NOTE: Chart not to scale.

WYLSN EIGHT DEPARTURE (RNAV)