

# FTHLS SIX DEPARTURE (RNAV)

AL-6494 (FAA)

CHANDLER MUNI (CHD)  
CHANDLER, ARIZONA

SW-4, 20 MAR 2025 to 17 APR 2025

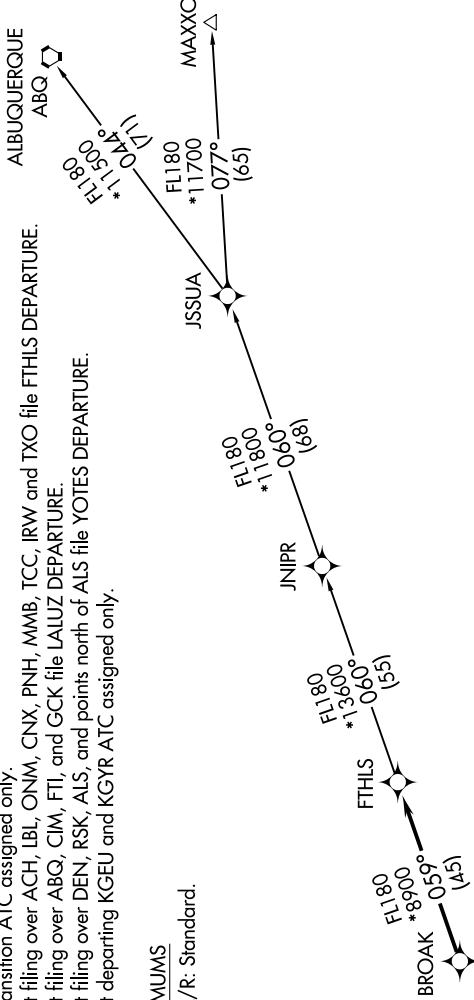
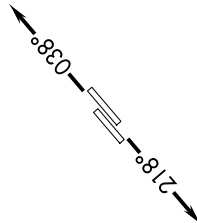
### TOP ALTITUDE: ASSIGNED BY ATC

NOTE: RNAV 1.  
 NOTE: Turboprops and turboprops only.  
 NOTE: RADAR required.  
 NOTE: GPS required.  
 NOTE: ABQ transition ATC assigned only.  
 NOTE: Aircraft filing over ACH, LBL, ONM, CNX, PNH, MMB, TCC, IRW and TXO file FTHLS DEPARTURE.  
 NOTE: Aircraft filing over ABQ, CIM, FTJ, and GCK file LALUZ DEPARTURE.  
 NOTE: Aircraft filing over DEN, RSK, ALS, and points north of ALS file YOTES DEPARTURE.  
 NOTE: Aircraft departing KGEU and KGYR ATC assigned only.

### TAKEOFF MINIMUMS

Rwys 4L/R, 22L/R: Standard.

ATIS  
128.325  
GND CON  
124.4  
CHANDLER TOWER \*  
126.1 (Rwy 4L-22R)  
133.1 (Rwy 4R-22L)  
PHOENIX DEP CON  
123.7 363.0



### DEPARTURE ROUTE DESCRIPTION

TAKEOFF RUNWAYS 4L/R: Climb heading 038° or as assigned by ATC. Thence. . . .  
 TAKEOFF RUNWAYS 22L/R: Climb heading 218° or as assigned by ATC. Thence. . . .  
 . . . expect RADAR vectors to BROAK, then on track 059° to FTHLS, then on (transition).  
 Maintain ATC assigned altitude, expect filed altitude 3 minutes after departure.

ALBUQUERQUE TRANSITION (FTHLS6.ABQ)

JNIPR TRANSITION (FTHLS6.JNIPR)

MAXXO TRANSITION (FTHLS6.MAXXO)

NOTE: Chart not to scale.

SW-4, 20 MAR 2025 to 17 APR 2025

# FTHLS SIX DEPARTURE (RNAV)