

IZZO EIGHT DEPARTURE (RNAV)

AL-6494 (FAA)

CHANDLER MUNI (CHD)
CHANDLER, ARIZONA

SW-4, 20 MAR 2025 to 17 APR 2025

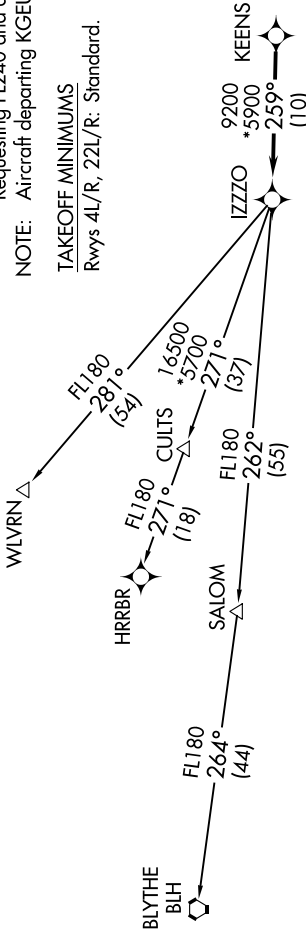
TOP ALTITUDE: ASSIGNED BY ATC

PHOENIX DEP CON
123.7 363.0
ATIS
128.325
GND CON
124.4
CHANDLER TOWER *
126.1 (Rwy 4L-22R)
133.1 (Rwy 4R-22L)

RNAV 1 - GPS.
RADAR required.

NOTE: Turbojets and turboprops only.
NOTE: Aircraft requesting FL220 and below must file BLYTHE Transition.
NOTE: Turbojets landing LAX, file WLVRN Transition.
NOTE: Aircraft landing other than LAX and turboprops landing at LAX: Requesting FL240 and above, file HRRBR Transition.
NOTE: Aircraft departing KGEU and KGYR ATC assigned only.

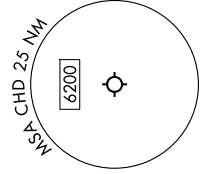
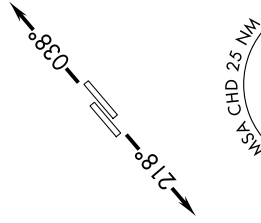
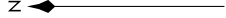
TAKEOFF MINIMUMS
Rwys 4L/R, 22L/R: Standard.



DEPARTURE ROUTE DESCRIPTION

TAKEOFF RUNWAYS 4L/R: Climb on track 038° or as assigned by ATC, thence. . .
TAKEOFF RUNWAYS 22L/R: Climb on track 218° or as assigned by ATC, thence. . .
. . . for RADAR vectors to KEENS, then on track 259° to IZZO, then on (transition).
Maintain ATC assigned altitude, expect filed altitude 3 minutes after departure.

BLYTHE TRANSITION (IZZO8.BLH)
HRRBR TRANSITION (IZZO8.HRRBR)
WLVRN TRANSITION (IZZO8.WLVRN)



NOTE: Chart not to scale.

IZZO EIGHT DEPARTURE (RNAV)

SW-4, 20 MAR 2025 to 17 APR 2025