

WAAS CH 72917 W07A	APP CRS 074°	Rwy Idg TDZE Apt Elev	7299 1460 1478
--	------------------------	-----------------------------	---

RNAV (GPS) RWY 7R

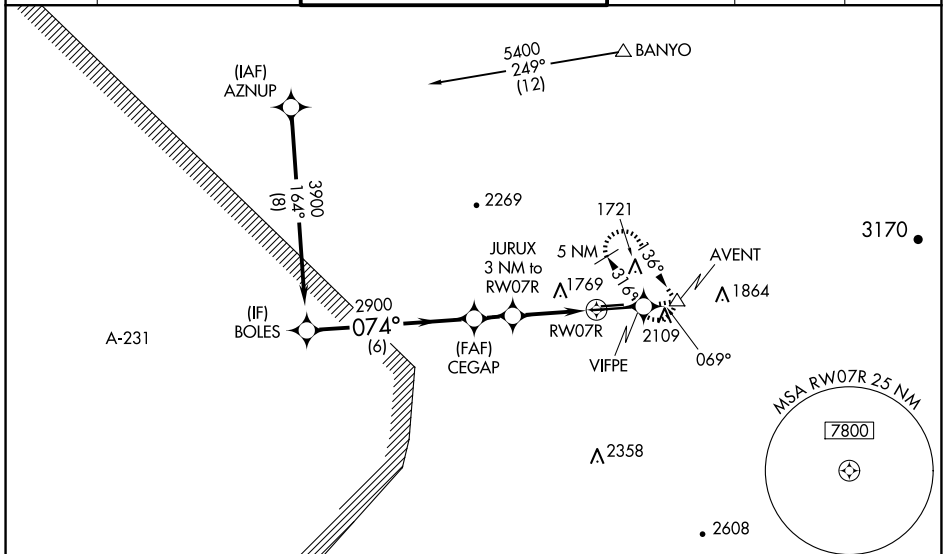
PHOENIX DEER VALLEY (DVT)

RNP APCH - GPS.

⚠ When VGSI inop, Circling Rwy 25R NA at night. When local altimeter setting not received, use Scottsdale altimeter setting: increase LPV DA to 1822 feet and all visibilities 1/8 SM, increase LNAV/VNAV DA to 2160 feet and all visibilities 1/8 SM, increase all MDAs 40 feet and increase Circling Cat B visibility 1/4 SM. For uncompensated Baro-VNAV systems, LNAV/VNAV NA below -17°C or above 54°C. Baro VNAV and VDP NA when using Scottsdale altimeter setting. Circling NA north of Rwy 7R-25L and VDP.

MISSED APPROACH: Climb to 5000 direct VIFPE and track 069° to AVENT and hold, continue climb-in-hold to 5000.

ATIS 126.5	PHOENIX APP CON 120.7 239.0	DEER VALLEY TOWER * 118.4 (070°-250°) (CTAF) 120.2 (251°-069°)	GND CON 121.8	CLNC DEL 123.9	UNICOM 122.95
----------------------	---------------------------------------	--	-------------------------	--------------------------	-------------------------



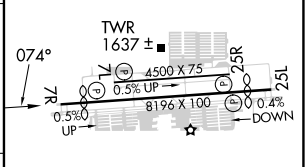
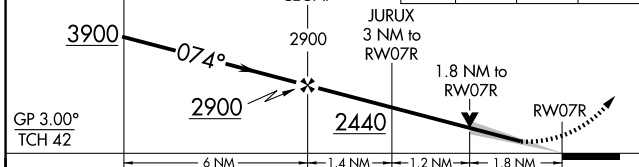
SW-4, 20 MAR 2025 to 17 APR 2025

SW-4, 20 MAR 2025 to 17 APR 2025

ELEV 1478	D TDZE 1460
-----------	--------------------

VGSI and RNAV glidepath not coincident (VGSI Angle 3.00/TCH 46).

5000	VIFPE	tr 069°	AVENT
------	-------	---------	-------



CATEGORY	A	B	C	D
LPV DA		1795-1 1/8	335 (400-1 1/8)	
LNAV/VNAV DA		2133-2 1/2	673 (700-2 1/2)	
LNAV MDA	2060-1	600 (600-1)	2060-1 3/4	600 (600-1 3/4)
CIRCLING	2400-1 1/4 922 (1000-1 1/4)	2420-1 1/4 942 (1000-1 1/4)	2580-3 1102 (1200-3)	2700-3 1222 (1300-3)

MIRL Rwy 7L-25R and 7R-25L
REIL Rwy 7L, 7R, 25L, and 25R