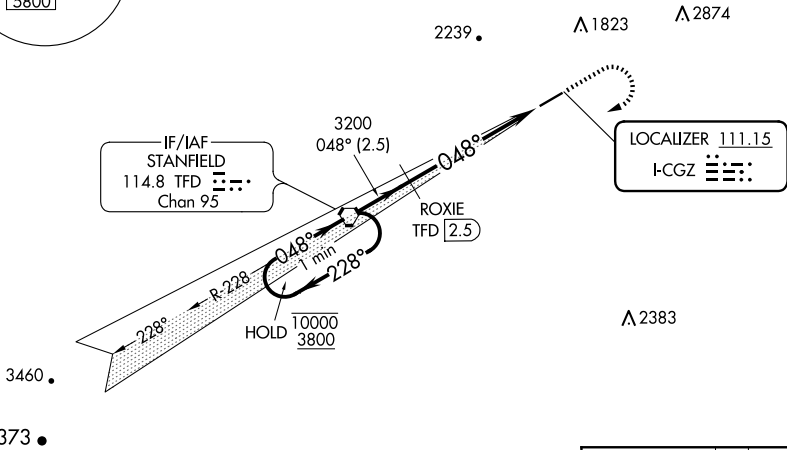
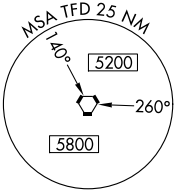


LOC I-CGZ 111.15	APP CRS 048°	Rwy Idg TDZE Apt Elev	5200 1458 1464
----------------------------	------------------------	-----------------------------	---

ILS or LOC RWY 5

CASA GRANDE MUNI (CGZ)

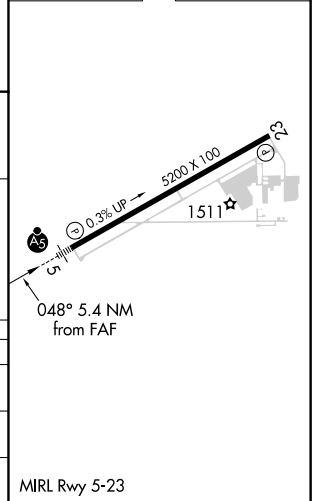
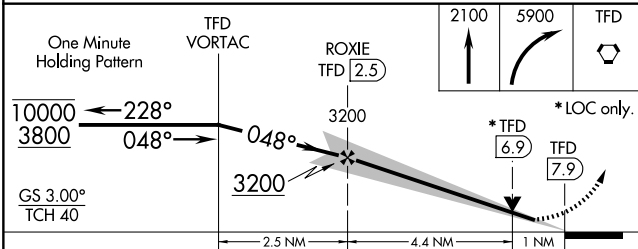
DME required for LOC only.		MALSRL 	MISSED APPROACH: Climb to 2100 then climbing right turn to 5900 direct STANFIELD VORTAC and hold. Continue climb in hold to 5900.
▼ ▲ NA	Circling NA for Cat C and D northwest of Rwy 5-23. Autopilot coupled approach NA below 1650. DME from TFD VORTAC. Simultaneous reception of I-CGZ and TFD DME required. For inop ALS, increase S-LOC 5 Cat C/D visibility to 1 SM.		
AWOS-3PT 132.175	ALBUQUERQUE CENTER 125.4 269.3	UNICOM 122.7 (CTAF) 0	



SW-4, 20 MAR 2025 to 17 APR 2025

SW-4, 20 MAR 2025 to 17 APR 2025

ELEV 1464	TDZE 1458
-----------	-----------



CATEGORY	A	B	C	D
S-ILS 5	1708-½		250 (300-½)	
S-LOC 5	1800-½	342 (400-½)	1800-⅝	342 (400-⅝)
■ CIRCLING	1960-1	496 (500-1)	1960-1½ 496 (500-1½)	2260-2½ 796 (800-2½)

MRL Rwy 5-23