

APP CRS	Rwy Idg	5001
088°	TDZE	1389
	Apt Elev	1395

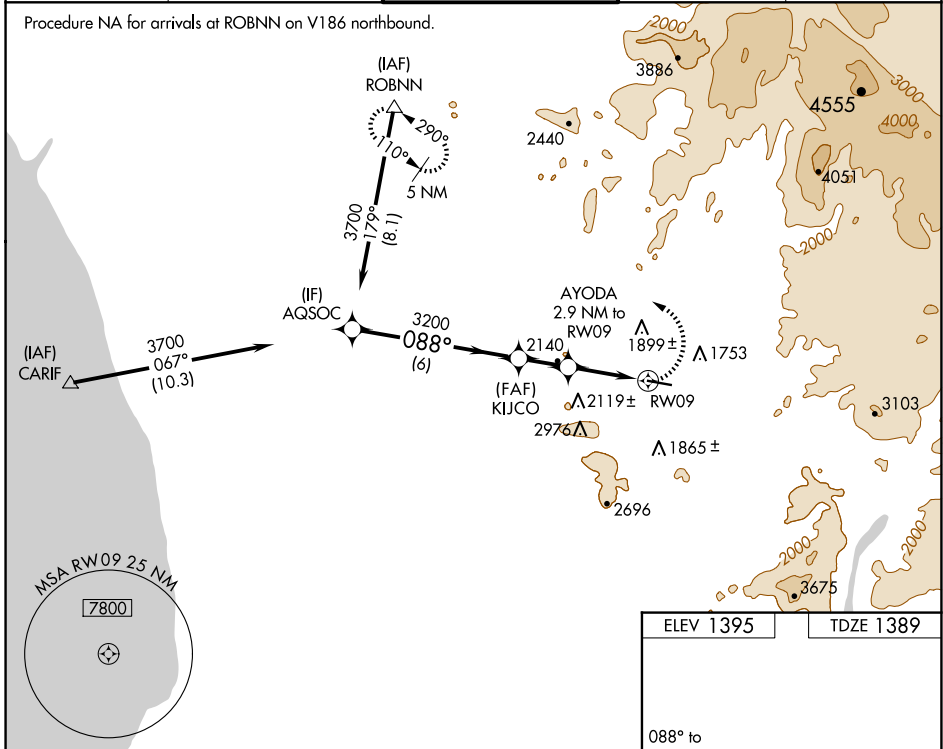
RNAV (GPS) RWY 9

RAMONA (R.NM)

⚠ Circling NA north of Rwy 9-27. Circling NA for Cat C when using Gillespie Fld altimeter setting. DME/DME RNP -0.3 NA. LNAV minima NA when using Gillespie Fld altimeter setting. When local altimeter setting not received, use Gillespie Fld altimeter setting and increase all Circling MDA 180 feet and increase Circling visibility Cat B ¼ SM. Helicopter visibility reduction below ¾ SM NA.

⚠ MISSED APPROACH: Climbing left turn to 5000 direct ROBNN and hold.

ATIS 132.025	SOCAL APP CON 132.2 269.1	RAMONA TOWER ★ 119.875 (CTAF) 0	GND CON 121.65	UNICOM 122.95
------------------------	-------------------------------------	---	--------------------------	-------------------------



SW-3, 20 MAR 2025 to 17 APR 2025

SW-3, 20 MAR 2025 to 17 APR 2025

	ELEV 1395	TDZE 1389
--	-----------	-----------

Procedure Turn NA	3700	3200	*2520	5001
	088°	3.54°	TCH 50	
	6 NM	1.8 NM	0.7 NM	2.2 NM

CATEGORY	A	B	C	D
LNAV MDA	2240-1 851 (900-1)	2240-1¼ 851 (900-1¼)	2240-2½ 851 (900-2½)	NA
CIRCLING	2240-1¼	845 (900-1¼)	3180-3 1785 (1800-3)	NA

REIL Rwy 27 0
MIRL Rwy 9-27 0