

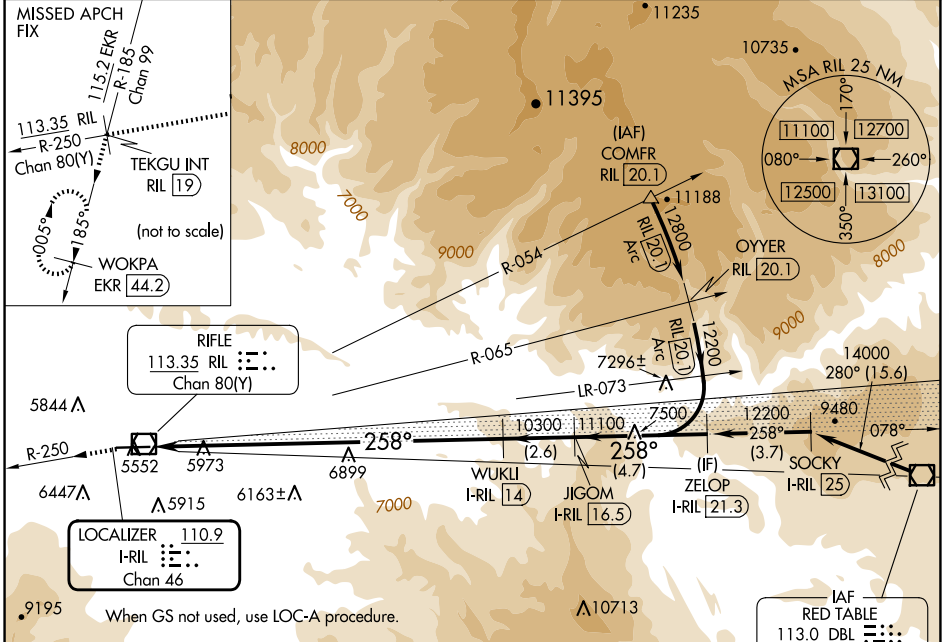
LOC/DME I-RIL 110.9 Chan 46	APP CRS 258°	Rwy Idg TDZE Apt Elev	7000 5537 5537
--	------------------------	-----------------------------	---

ILS RWY 26

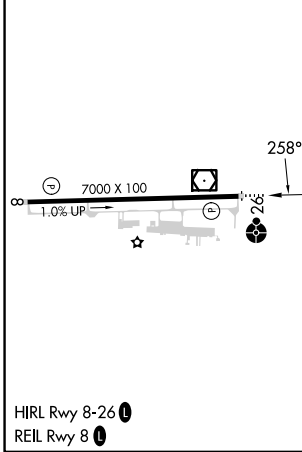
RIFLE GARFIELD COUNTY (R.I.L)

DME required.	ODALS	MISSED APPROACH: Climb to 14000 on RIL VOR/DME R-250 to TEKGU INT/RIL 19 DME and on EKR VOR/DME R-185 to WOKPA/EKR 44.2 DME and hold. Missed approach requires minimum climb of 420 feet per NM to 9600; if unable to meet climb gradient, see LOC-A.
---------------	-------	---

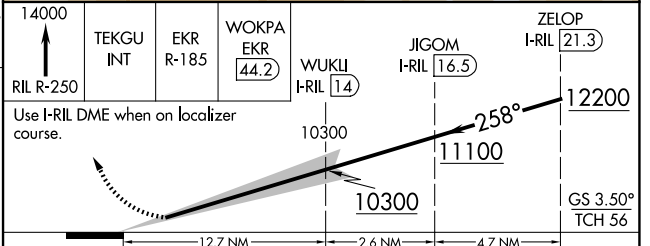
ASOS 135.275	DENVER CENTER 134.95 327.075	UNICOM 122.8 (CTAF) 0
------------------------	--	---------------------------------



ELEV 5537	TDZE 5537
-----------	-----------



Procedure NA for arrival on DBL VOR/DME airway radials 244 CW 297.



CATEGORY	A	B	C	D
S-ILS 26	6150-1½		613 (700-1½)	

SW-1, 20 MAR 2025 to 17 APR 2025

SW-1, 20 MAR 2025 to 17 APR 2025