

APP CRS	Rwy Idg	7000
259°	TDZE	5537
	Apt Elev	5537

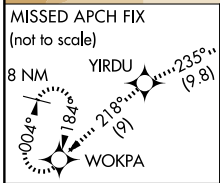
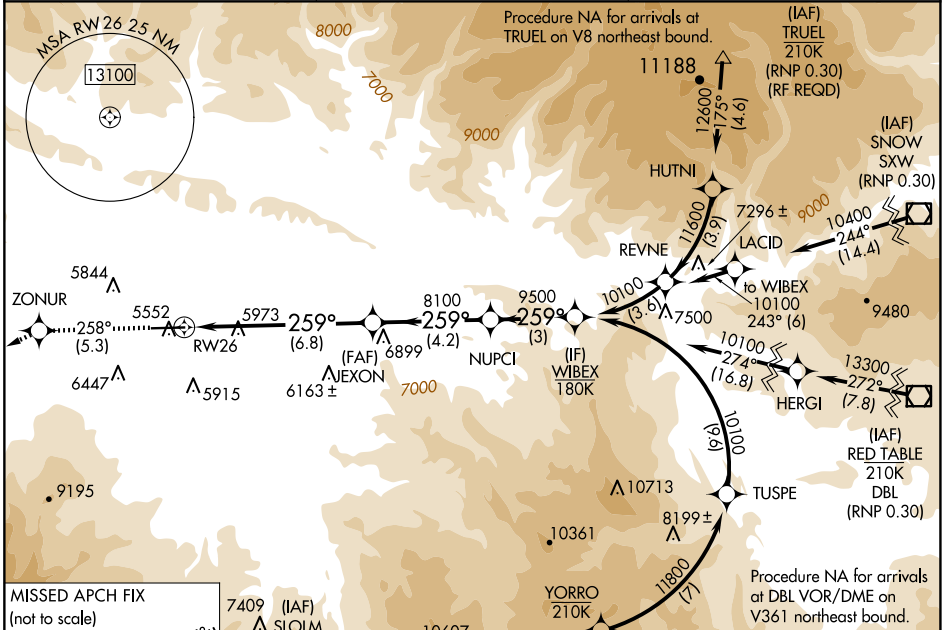
RNAV (RNP) Y RWY 26

RIFLE GARFIELD COUNTY (R.I.L)

When VGSI inoperative, procedure NA at night. For uncompensated Baro-VNAV systems, procedure NA below -24°C (-11°F) or above 38°C (100°F). GPS required.

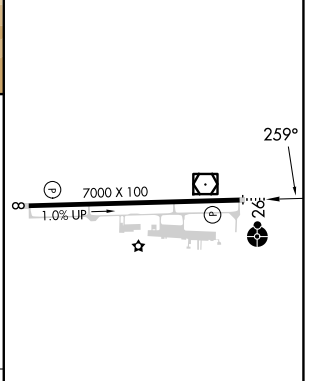
ODALS
 MISSED APPROACH: Climb to 13000 on track 258° to ZONUR and track 235° to YIRDU and track 218° to WOKPA and hold, continue climb-in-hold to 13000.

ASOS 135.275	DENVER CENTER 134.95 327.075	UNICOM 122.8 (CTAF) 0
------------------------	--	---------------------------------



13000	ZONUR	YIRDU	WOKPA
tr 258°	tr 235°	tr 218°	
	JEXON	NUPCI	WIBEX
	8100	9500	10100
	8100		
	6.8 NM	4.2 NM	3 NM

ELEV 5537	TDZE 5537
-----------	-----------



CATEGORY	A	B	C	D
RNP 0.30 DA	6387-2½		850 (900-2½)	NA

AUTHORIZATION REQUIRED

HIRL Rwy 8-26 0
 REIL Rwy 8 0

SW-1, 20 MAR 2025 to 17 APR 2025

SW-1, 20 MAR 2025 to 17 APR 2025