

APP CRS	Rwy Idg	7000
259°	TDZE	5537
	Apt Elev	5537

RNAV (GPS) W RWY 26

RIFLE GARFIELD COUNTY (R.I.L)

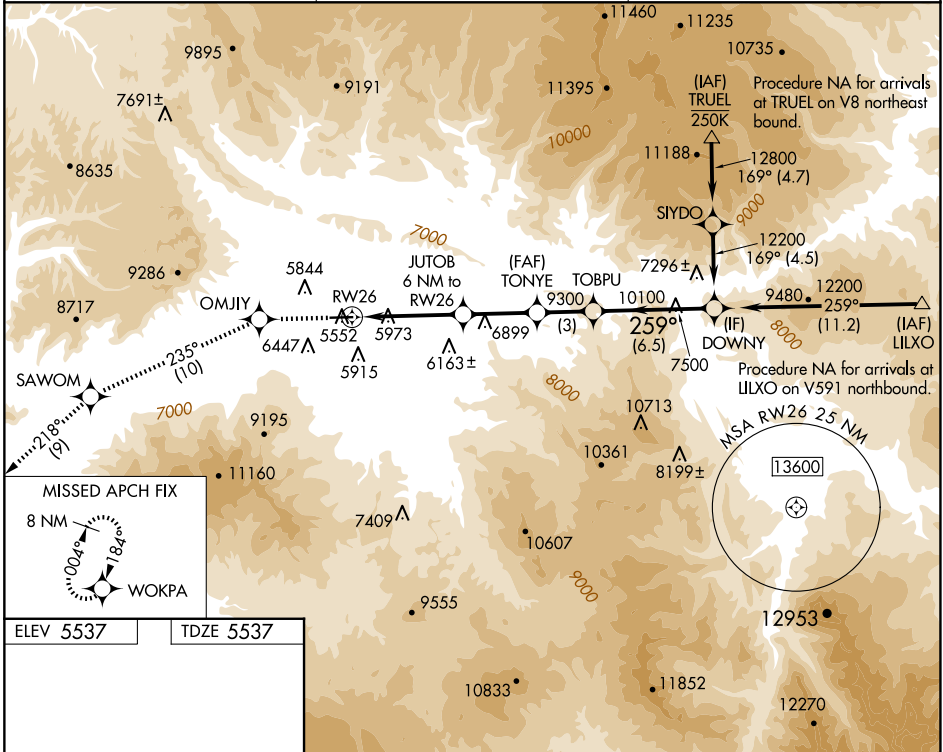
RNP APCH - GPS.

▼ Rwy 26 helicopter visibility reduction below 3/4 SM NA.
▲ Inop table does not apply. Circling NA south of
☉ -14°C Rwy 8-26 at night.

ODALS

MISSED APPROACH: Climb to 14000 direct OMJIY and on track 235° to SAWOM and on track 218° to WOKPA and hold, continue climb-in-hold to 14000.

ASOS 135.275	DENVER CENTER 134.95 327.075	UNICOM 122.8 (CTAF) 0
------------------------	--	---------------------------------



ELEV 5537	TDZE 5537
-----------	-----------

HIRL Rwy 8-26 0
 REIL Rwy 8 0

14000	OMJIY	tr 235°	SAWOM	tr 218°	WOKPA	DOWNY	
			JUTOB 6 NM to RWY 26	TONYE			
			4.3 NM to RWY 26	9300	10100	12200	
			7820				
			4.3 NM	1.7 NM	4 NM	3 NM	6.5 NM
CATEGORY	A		B		C		D
LNAV MDA	7220-1¼ 1683 (1700-1¼)		7220-1½ 1683 (1700-1½)		7220-3		1683 (1700-3)
CIRCLING	7220-1¼ 1683 (1700-1¼)		7220-1½ 1683 (1700-1½)		7220-3		8100-3 2563 (2600-3)

SW-1, 20 MAR 2025 to 17 APR 2025

SW-1, 20 MAR 2025 to 17 APR 2025