

WAAS CH <b>93708</b> <b>W26A</b>	APP CRS <b>259°</b>	Rwy Idg TDZE Apt Elev	<b>7000</b> <b>5537</b> <b>5537</b>
----------------------------------------	------------------------	-----------------------------	-------------------------------------------

# RNAV (GPS) X RWY 26

RIFLE GARFIELD COUNTY(R.I.L)

RNP APCH - GPS.

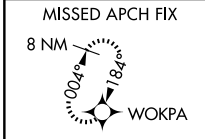
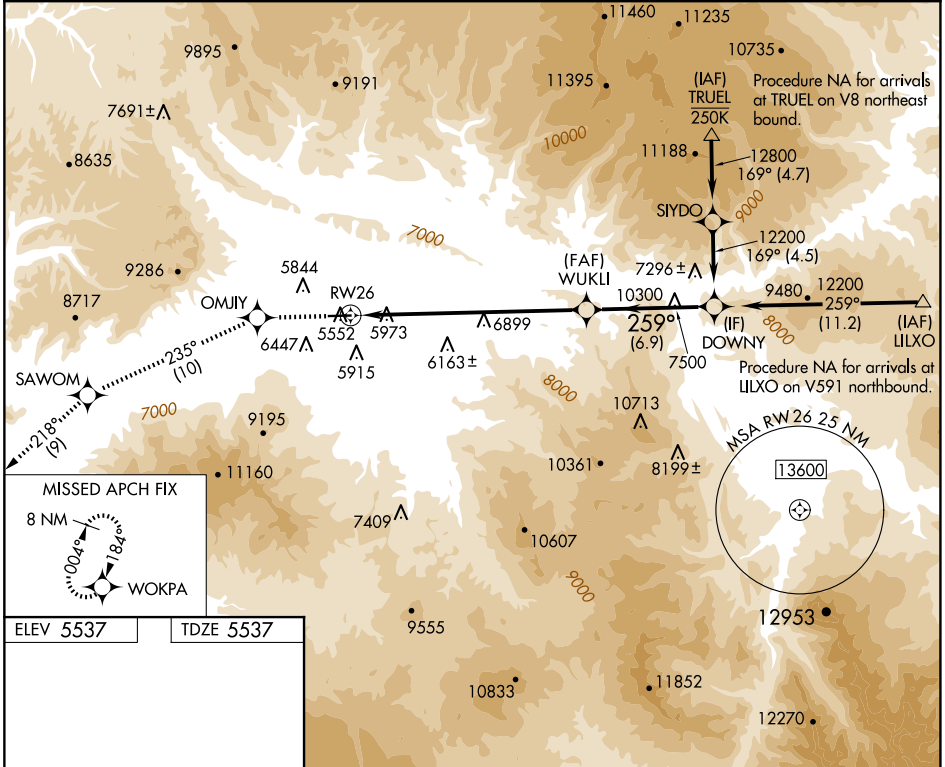
**NA** For inop ALS, increase LPV all Cats visibility to 2 1/2 SM.

**-14°C**

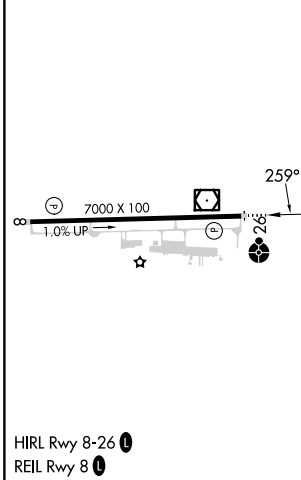
**ODALS**

**MISSED APPROACH:** Climb to 14000 direct OMJIY and on track 235° to SAWOM and on track 218° to WOKPA and hold, continue climb-in-hold to 14000. Missed approach requires a minimum climb gradient of 290 feet per NM to 9600 feet; if unable to meet climb gradient, see RNAV (GPS) W RWY 26.

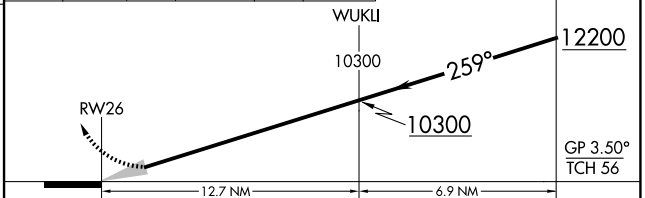
ASOS <b>135.275</b>	DENVER CENTER <b>134.95 327.075</b>	UNICOM <b>122.8 (CTAF) 0</b>
------------------------	----------------------------------------	---------------------------------



ELEV <b>5537</b>	TDZE <b>5537</b>
------------------	------------------



14000	OMJIY	tr 235°	SAWOM	tr 218°	WOKPA	DOWNY
-------	-------	---------	-------	---------	-------	-------



CATEGORY	A	B	C	D
LPV DA	6300-2 763 (800-2)			

SW-1, 20 MAR 2025 to 17 APR 2025

SW-1, 20 MAR 2025 to 17 APR 2025