

| | | |
|-------------|----------|-------------|
| APP CRS | Rwy Idg | 7000 |
| 068° | TDZE | 5498 |
| | Apt Elev | 5537 |

RNAV (GPS) Y RWY 8

RIFLE GARFIELD COUNTY (R.I.L)

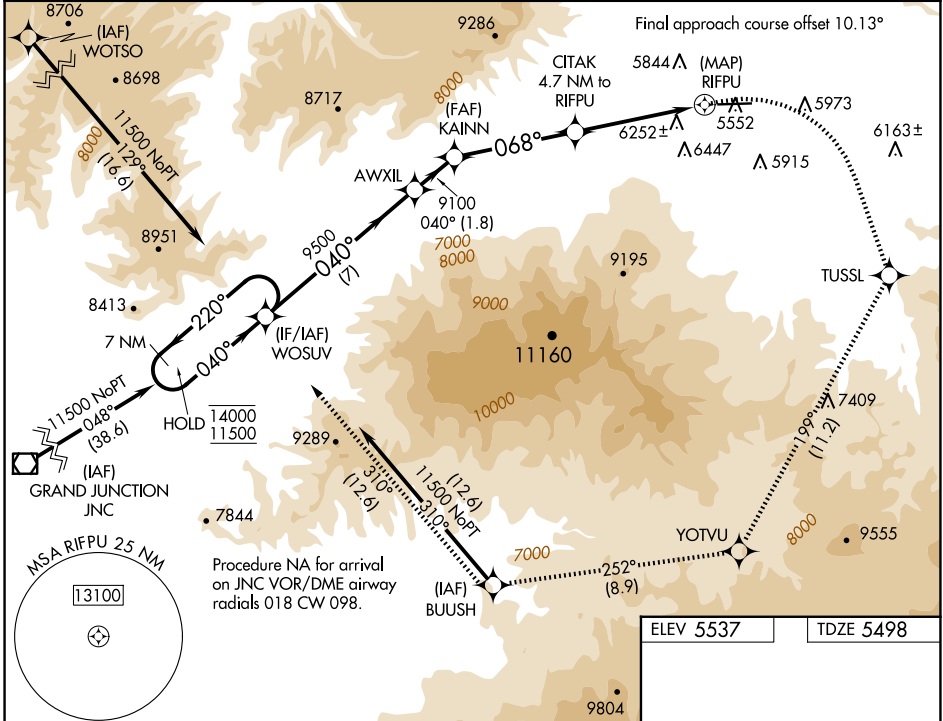
RNP APCH - GPS.

⚠ Circling NA south of Rwy 8-26 at night.

❄ -14°C

MISSED APPROACH: Climbing right turn to 14000 direct TUSSL and on track 199° to YOTVU and on track 252° to BUUSH and on track 310° to WOSUV and hold, continue climb-in-hold to 14000.

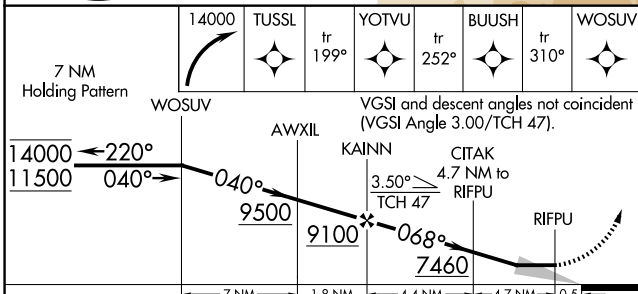
| | | |
|------------------------|--|---------------------------------|
| ASOS 135.275 | DENVER CENTER 134.95 327.075 | UNICOM 122.8 (CTAF) 0 |
|------------------------|--|---------------------------------|



SW-1, 20 MAR 2025 to 17 APR 2025

SW-1, 20 MAR 2025 to 17 APR 2025

| | |
|-----------|-----------|
| ELEV 5537 | TDZE 5498 |
|-----------|-----------|



| | | | | |
|--|---------------------------|---------------------------|-------------------------|-------------------------|
| 7 NM Holding Pattern | 14000 TUSSL tr 199° | YOTVU tr 252° | BUUSH tr 310° | WOSUV |
| VGSI and descent angles not coincident (VGSI Angle 3.00/TCH 47). | | | | |
| 14000 ← 220° | 11500 ← 040° | 9500 ← 040° | 9100 ← 068° | 7460 ← 252° |
| | | | | |
| CATEGORY | A | B | C | D |
| RNAV MDA | 7420-1¼ 1922 (1900-1¼) | 7420-1½ 1922 (1900-1½) | 7420-3 1922 (1900-3) | 8100-3 |
| CIRCLING | 7420-1¼ 1883 (1900-1¼) | 7420-1½ 1883 (1900-1½) | 7420-3 1883 (1900-3) | 8100-3 2563 (2600-3) |
| HIRL Rwy 8-26 0 REIL Rwy 8 0 | | | | |