

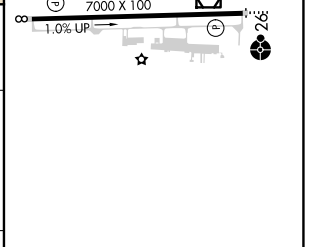
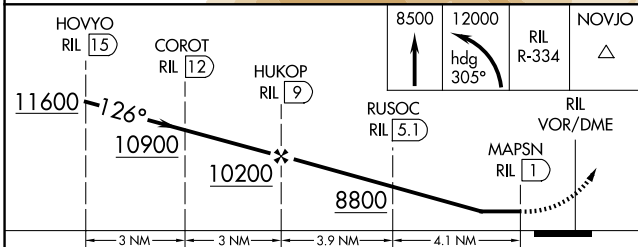
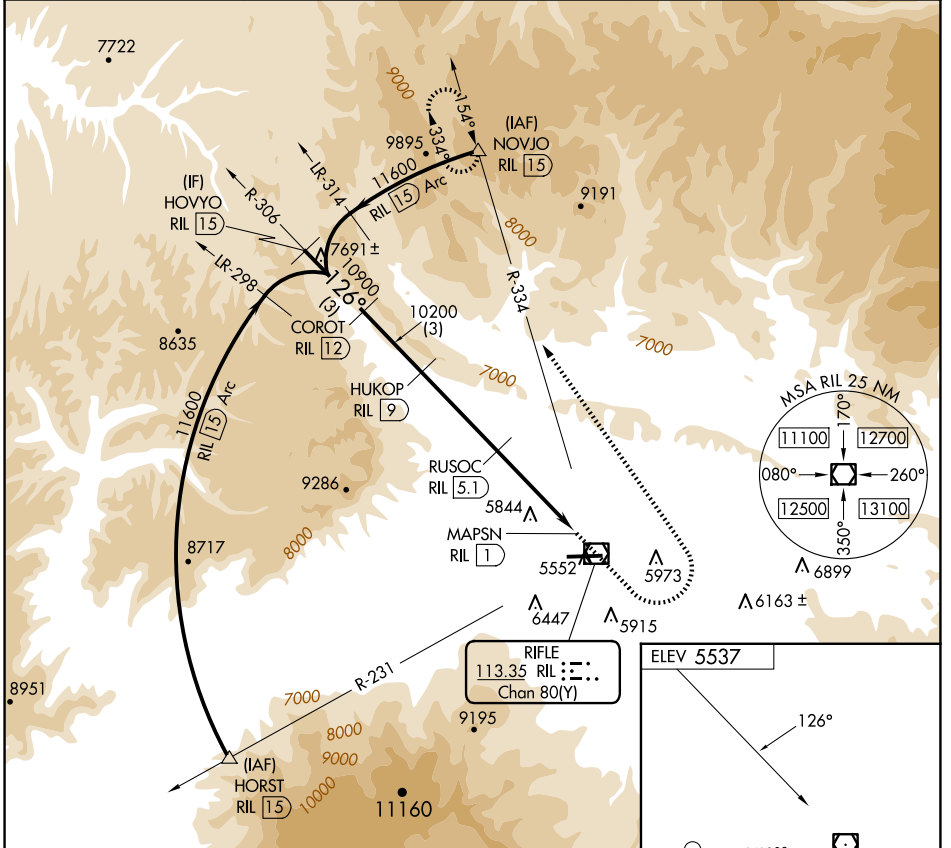
VOR/DME RIL 113.35 Chan 80 (Y)	APP CRS 126°	Rwy Idg TDZE Apt Elev N/A N/A 5537
--	------------------------	--

VOR/DME-C

RIFLE GARFIELD COUNTY (RIL)

<p>Circling NA south of Rwy 8-26 at night. -14°C</p>	<p>MISSED APPROACH: Climb to 8500 then climbing left turn 12000 on heading 305° and RIL VOR/DME R-334 to NOVJO/15 DME and hold, continue climb-in-hold to 12400.</p>
--	--

ASOS 135.275	DENVER CENTER 134.95 327.075	UNICOM 122.8 (CTAF)
------------------------	--	-------------------------------



CATEGORY	A	B	C	D
CIRCLING	7360-1¼ 1823 (1900-1¼)	7360-1½ 1823 (1900-1½)	7360-3 1823 (1900-3)	NA

HIRL Rwy 8-26
REIL Rwy 8

SW-1, 20 MAR 2025 to 17 APR 2025

SW-1, 20 MAR 2025 to 17 APR 2025