

APP CRS	Rwy Idg	<b>3222</b>
<b>088°</b>	TDZE	<b>465</b>
	Apt Elev	<b>465</b>

# RNAV (GPS) Y RWY 9

BRANDYWINE RGNL (OQN)

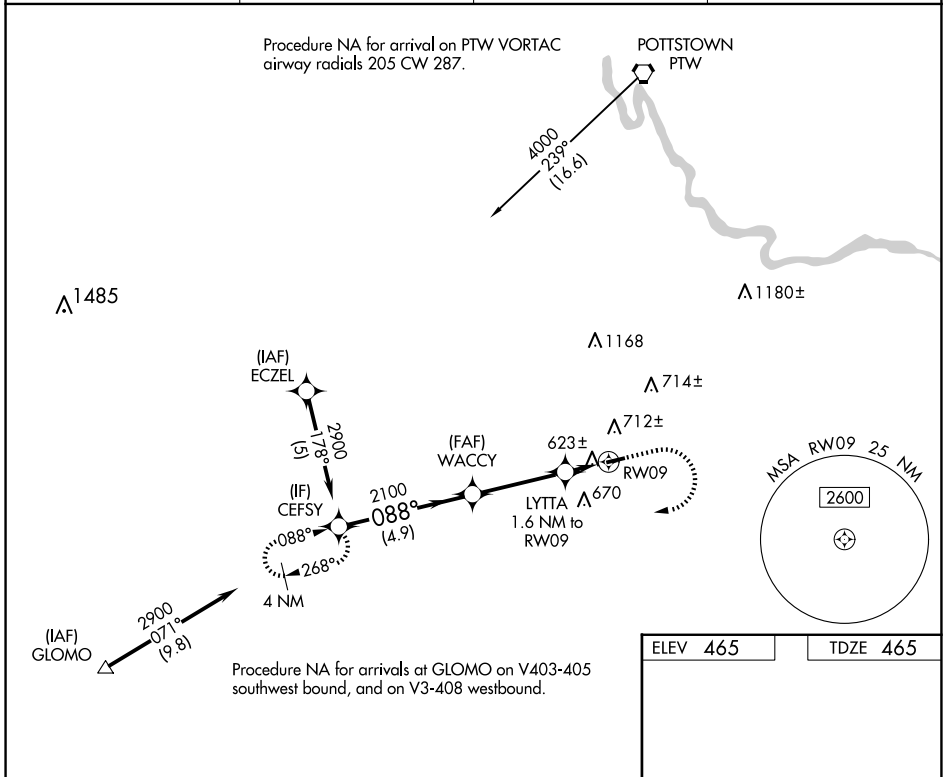
RNP APCH - GPS.

**▼** Rwy 9 helicopter visibility reduction below 3/4 SM NA. When local altimeter setting not received, use Coatesville altimeter setting and increase all MDAs 60 feet.

**▲**

MISSED APPROACH: Climb to 1000 then climbing right turn to 2900 direct CEFSY and hold.

AWOS-3T <b>121.4</b>	PHILADELPHIA APP CON <b>124.35 319.15</b>	CLNC DEL <b>125.6</b>	UNICOM <b>123.075</b> (CTAF)
-------------------------	--	--------------------------	---------------------------------

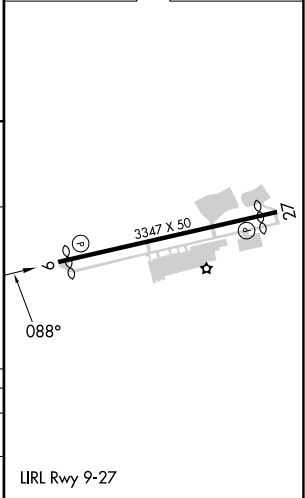
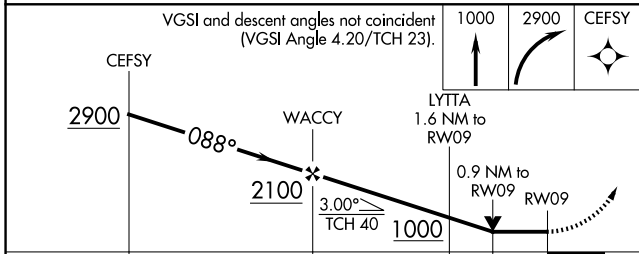


NE-4, 20 MAR 2025 to 17 APR 2025

NE-4, 20 MAR 2025 to 17 APR 2025

ELEV 465	TDZE 465
----------	----------

Procedure NA for arrivals at GLOMO on V403-405 southwest bound, and on V3-408 westbound.



CATEGORY	A	B	C	D
LNAV MDA	880-1	415 (500-1)		NA
<b>C</b> CIRCLING	1020-1	555 (600-1)		NA

LURL Rwy 9-27