

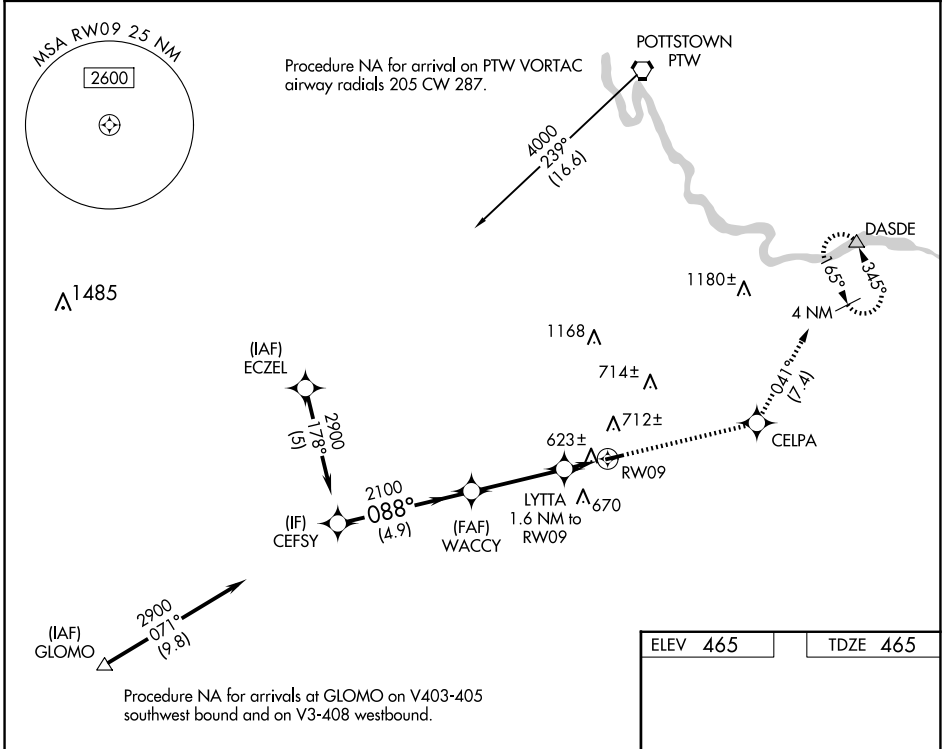
APP CRS	Rwy Idg	<b>3222</b>
<b>088°</b>	TDZE	<b>465</b>
	Apt Elev	<b>465</b>

# RNAV (GPS) Z RWY 9

BRANDYWINE RGNL (OQN)

RNP APCH - GPS.	MISSED APPROACH: Climb to 2900 direct CELPA and left turn on track 041° to DASDE and hold.
<p><b>▼</b> Rwy 9 helicopter visibility reduction below 3/4 SM NA. When local altimeter setting not received, use Coatesville altimeter setting and increase all MDAs 60 feet.</p> <p><b>▲</b></p>	

AWOS-3T <b>121.4</b>	PHILADELPHIA APP CON <b>124.35 319.15</b>	CLNC DEL <b>125.6</b>	UNICOM <b>123.075 (CTAF)</b>
-------------------------	--	--------------------------	---------------------------------



NE-4, 20 MAR 2025 to 17 APR 2025

NE-4, 20 MAR 2025 to 17 APR 2025

VGS1 and descent angles not coincident (VGS1 Angle 4.20/TCH 23).		2900	CELPA	DASDE
CEFSY		↑	✦	tr 041°
WACCY				
LYTTA 1.6 NM to RWY 9		0.9 NM to RWY 9		
4.9 NM		3.4 NM	0.7	0.9
CATEGORY	A	B	C	D
LNAV MDA	880-1	415 (500-1)	NA	
<b>C</b> CIRCLING	1020-1	555 (600-1)	NA	
				LURL Rwy 9-27